



Francis C. Hammond Middle School

Based on the moderate projection, Francis C. Hammond Middle School will decrease by 150 students by the 2015-16 school year. The yellow bars of the graph indicate historical enrollment for Francis C. Hammond Middle School; the blue bars show the moderate, or most likely, enrollment projection for this school.

Francis C. Hammond Middle School - Historical Enrollment

Grade	1996-97	1997-98	1998-99	1999-00	2000-01	2001-02	2002-03	2003-04	2004-05	2005-06
6	383	410	381	386	428	426	465	412	445	396
7	366	375	392	398	411	420	413	452	407	405
8	349	364	362	368	374	392	415	395	419	351
6 - 8 Total	1,098	1,149	1,135	1,152	1,213	1,238	1,293	1,259	1,271	1,152

Source: Alexandria City Public Schools

Francis C. Hammond Middle School Projected Enrollment - Moderate

Grade	2006-07	2007-08	2008-09	2009-10	2010-11	2011-12	2012-13	2013-14	2014-15	2015-16
6	401	389	354	352	315	325	371	338	357	363
7	381	385	374	340	338	302	312	356	324	342
8	371	348	352	342	311	309	276	286	326	297
6 - 8 Total	1,153	1,122	1,080	1,034	964	936	959	980	1,007	1,002

Francis C. Hammond Middle School Projected Enrollment - High

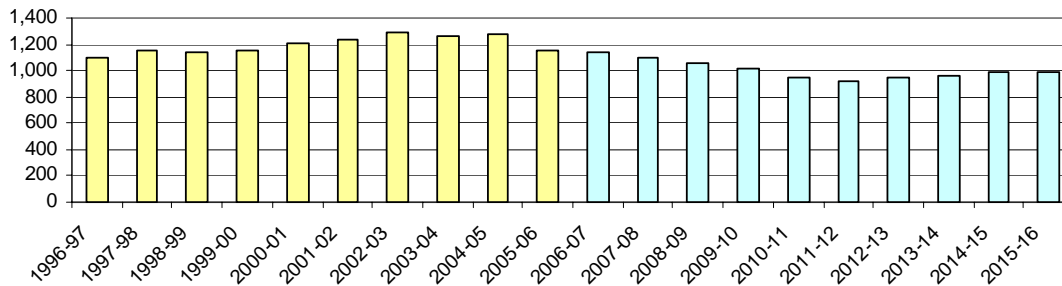
Grade	2006-07	2007-08	2008-09	2009-10	2010-11	2011-12	2012-13	2013-14	2014-15	2015-16
6	403	405	376	385	348	366	429	391	413	420
7	386	393	395	367	375	339	357	418	381	402
8	373	355	362	363	337	345	312	328	384	350
6 - 8 Total	1,162	1,153	1,133	1,115	1,060	1,050	1,098	1,137	1,178	1,172

Francis C. Hammond Middle School Projected Enrollment - Low

Grade	2006-07	2007-08	2008-09	2009-10	2010-11	2011-12	2012-13	2013-14	2014-15	2015-16
6	396	376	335	324	283	288	311	283	299	304
7	377	376	357	318	308	268	274	295	269	284
8	365	339	338	322	286	277	242	246	266	242
6 - 8 Total	1,138	1,091	1,030	964	877	833	827	824	834	830

Source: DeJONG

Francis C. Hammond MS Historical Enrollment and Moderate Projected Enrollment



The following map shows the attendance boundary and distribution of students attending Francis C. Hammond Middle School.

Francis C. Hammond Middle School Students & Attendance Boundary



Legend

Expressway	Student
Primary Collector	Schools
Arterial	Elementary
Residential Collector	Middle School
Local	High School
Ramp	Leased
Alley	

DEJONG

0 0.4 0.8 1.2 Miles

Francis C. Hammond MS		Number of Students
Unmatched		3
Attend		1167
Live In		1097
Live In/Attend In		1085
Attend In/Live Out		65
Live In/Attend Out		12



George Washington Middle School

Based on the moderate projection, George Washington Middle School will decrease by 42 students by the 2015-16 school year. The yellow bars of the graph indicate historical enrollment for George Washington Middle School; the blue bars show the moderate, or most likely, enrollment projection for this school.

George Washington Middle School - Historical Enrollment

Grade	1996-97	1997-98	1998-99	1999-00	2000-01	2001-02	2002-03	2003-04	2004-05	2005-06
6	341	346	380	389	372	377	382	392	387	351
7	371	345	310	333	346	356	336	352	350	352
8	330	345	317	299	328	315	313	323	320	347
6 - 8 Total	1,042	1,036	1,007	1,021	1,046	1,048	1,031	1,067	1,057	1,050

Source: Alexandria City Public Schools

George Washington Middle School Projected Enrollment - Moderate

Grade	2006-07	2007-08	2008-09	2009-10	2010-11	2011-12	2012-13	2013-14	2014-15	2015-16
6	327	330	324	344	342	354	381	347	367	373
7	320	298	300	294	313	312	322	347	316	334
8	336	305	284	286	281	298	297	308	331	301
6 - 8 Total	983	933	908	924	936	964	1,000	1,002	1,014	1,008

George Washington Middle School Projected Enrollment - High

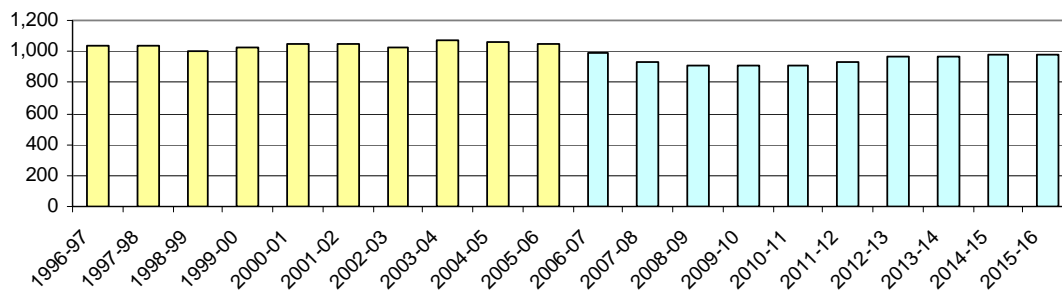
Grade	2006-07	2007-08	2008-09	2009-10	2010-11	2011-12	2012-13	2013-14	2014-15	2015-16
6	331	337	335	366	369	383	439	400	422	430
7	326	307	312	311	339	342	356	407	371	392
8	339	314	296	301	300	327	329	343	392	357
6 - 8 Total	996	958	943	978	1,008	1,052	1,124	1,150	1,185	1,179

George Washington Middle School Projected Enrollment - Low

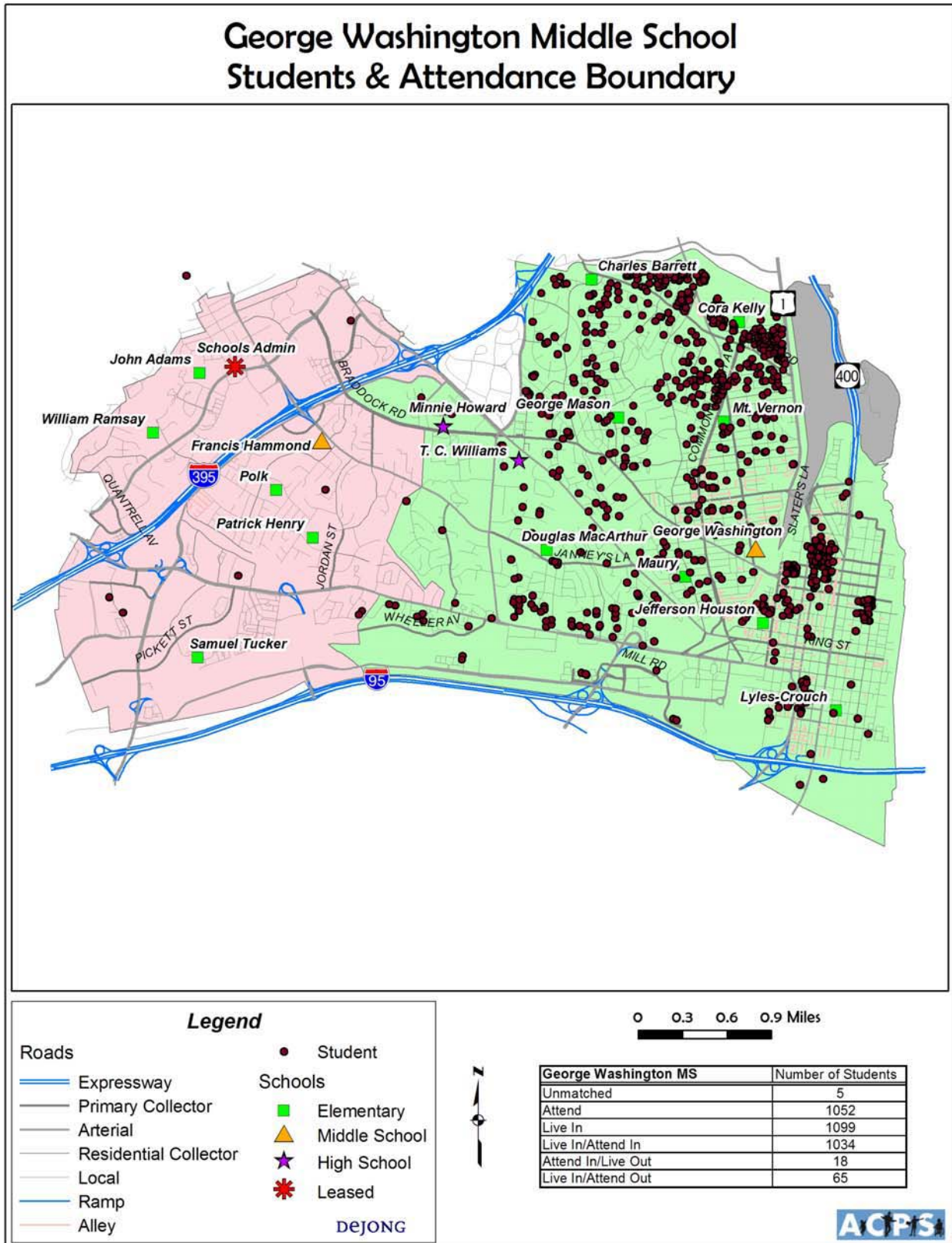
Grade	2006-07	2007-08	2008-09	2009-10	2010-11	2011-12	2012-13	2013-14	2014-15	2015-16
6	325	319	301	315	303	308	314	286	302	307
7	315	292	286	270	283	272	276	281	256	271
8	333	298	276	270	255	267	257	261	266	242
6 - 8 Total	973	909	863	855	841	847	847	828	824	820

Source: DeJONG

George Washington MS Historical Enrollment and Moderate Projected Enrollment



The following map shows the attendance boundary and distribution of students attending George Washington Middle School.





Minnie Howard 9th Grade Center

Based on the moderate projection, Minnie Howard 9th Grade Center will decrease by 75 students by the 2015-16 school year. The yellow bars of the graph indicate historical enrollment for Minnie Howard 9th Grade Center; the blue bars show the moderate, or most likely, enrollment projection for this school.

Minnie Howard 9th Grade Center - Historical Enrollment

Grade	1996-97	1997-98	1998-99	1999-00	2000-01	2001-02	2002-03	2003-04	2004-05	2005-06
9	700	674	728	697	688	714	746	718	731	744
Grand Total	700	674	728	697	688	714	746	718	731	744

Source: Alexandria City Public Schools

Minnie Howard 9th Grade Center Projected Enrollment - Moderate

Grade	2006-07	2007-08	2008-09	2009-10	2010-11	2011-12	2012-13	2013-14	2014-15	2015-16
9	719	728	671	647	649	607	624	586	605	669
Grand Total	719	728	671	647	649	607	624	586	605	669

Minnie Howard 9th Grade Center Projected Enrollment - High

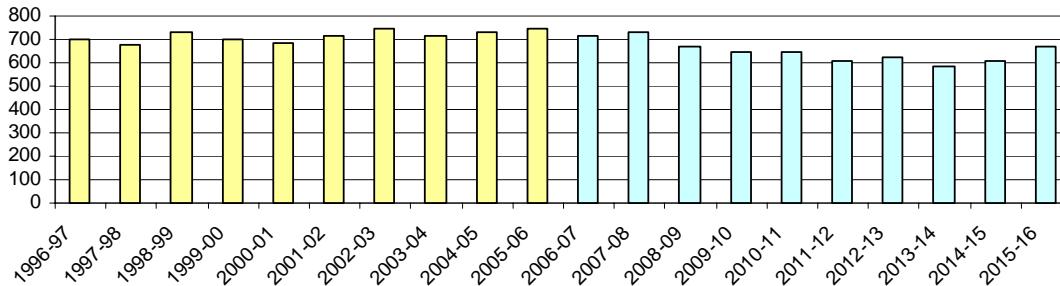
Grade	2006-07	2007-08	2008-09	2009-10	2010-11	2011-12	2012-13	2013-14	2014-15	2015-16
9	717	736	688	680	700	668	695	660	696	827
Grand Total	717	736	688	680	700	668	695	660	696	827

Minnie Howard 9th Grade Center Projected Enrollment - Low

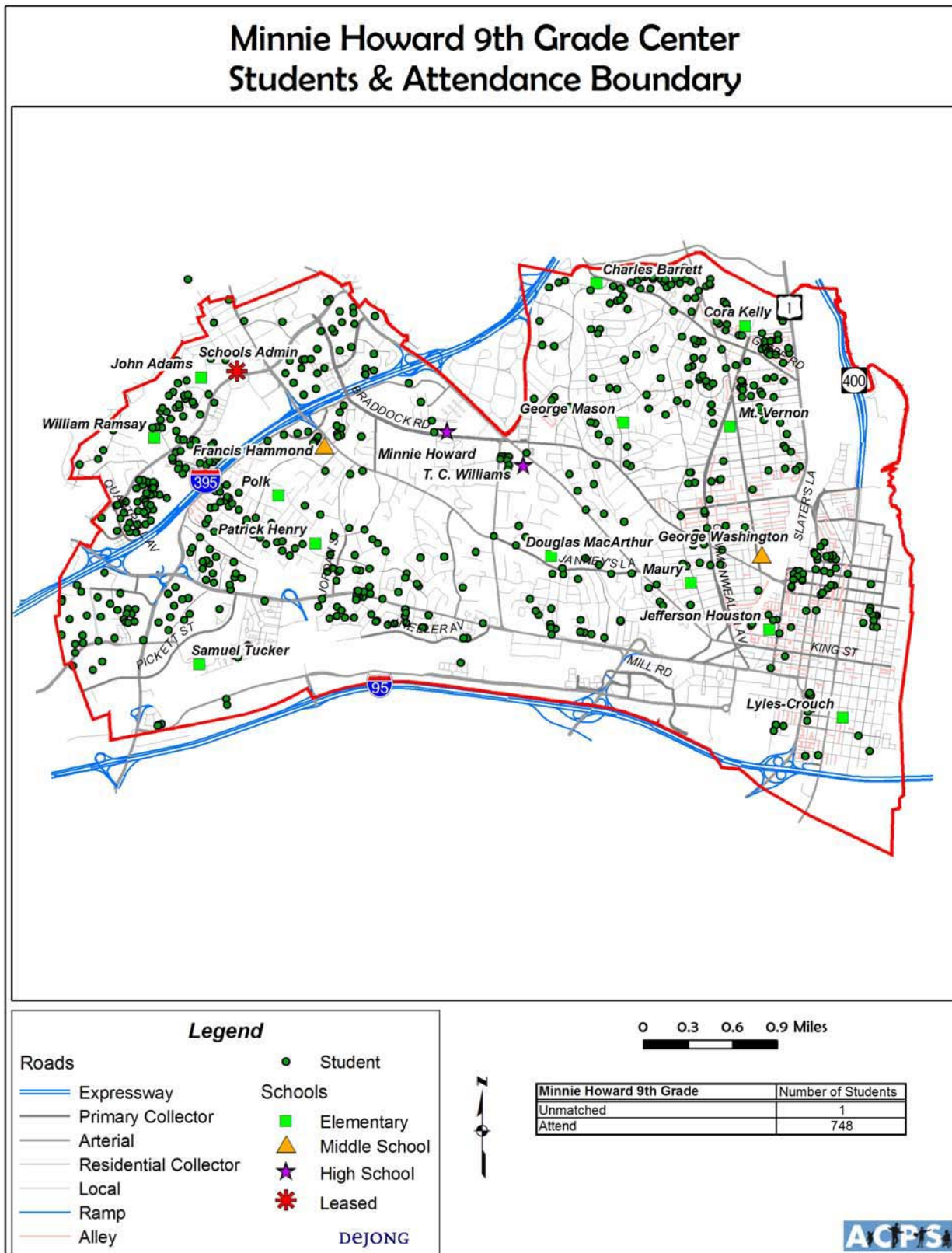
Grade	2006-07	2007-08	2008-09	2009-10	2010-11	2011-12	2012-13	2013-14	2014-15	2015-16
9	717	716	650	612	601	549	557	517	525	523
Grand Total	717	716	650	612	601	549	557	517	525	523

Source: DeJONG

**Minnie Howard 9th Grade Center
 Historical Enrollment and Moderate Projected Enrollment**



The following map shows the distribution of students attending Minnie Howard 9th Grade Center.





TC Williams High School

Based on the moderate projection, TC Williams High School will decrease by 91 students by the 2015-16 school year. The yellow bars of the graph indicate historical enrollment for TC Williams High School; the blue bars show the moderate, or most likely, enrollment projection for this school.

TC Williams High School - Historical Enrollment

Grade	1996-97	1997-98	1998-99	1999-00	2000-01	2001-02	2002-03	2003-04	2004-05	2005-06
9	0	0	0	0	0	0	0	0	20	18
10	691	720	730	773	863	854	782	801	726	690
11	618	627	686	661	631	627	683	645	665	662
12	522	532	556	558	536	532	544	551	542	560
SCSE	4	5	5	5	0	0	0	0	0	0
Grand Total	1,835	1,884	1,977	1,997	2,030	2,013	2,009	1,997	1,953	1,930

Source: Alexandria City Public Schools

TC Williams High School Projected Enrollment - Moderate

Grade	2006-07	2007-08	2008-09	2009-10	2010-11	2011-12	2012-13	2013-14	2014-15	2015-16
9	19	19	17	17	17	16	16	15	16	17
10	807	768	785	733	715	730	690	709	666	687
11	608	711	676	690	645	629	642	607	624	586
12	583	535	625	595	608	568	554	565	534	549
SCSE	0	0	0	0	0	0	0	0	0	0
Grand Total	2,017	2,033	2,103	2,035	1,985	1,943	1,902	1,896	1,840	1,839

TC Williams High School Projected Enrollment - High

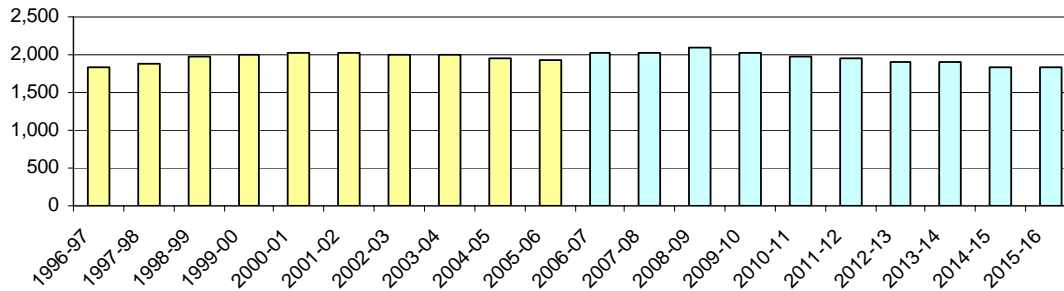
Grade	2006-07	2007-08	2008-09	2009-10	2010-11	2011-12	2012-13	2013-14	2014-15	2015-16
9	18	19	18	18	18	17	18	17	18	21
10	822	783	804	752	743	765	730	759	721	768
11	627	747	712	730	683	675	695	663	690	655
12	586	555	661	630	647	604	598	615	587	610
SCSE	0	0	0	0	0	0	0	0	0	0
Grand Total	2,053	2,104	2,195	2,130	2,091	2,061	2,041	2,054	2,016	2,054

TC Williams High School Projected Enrollment - Low

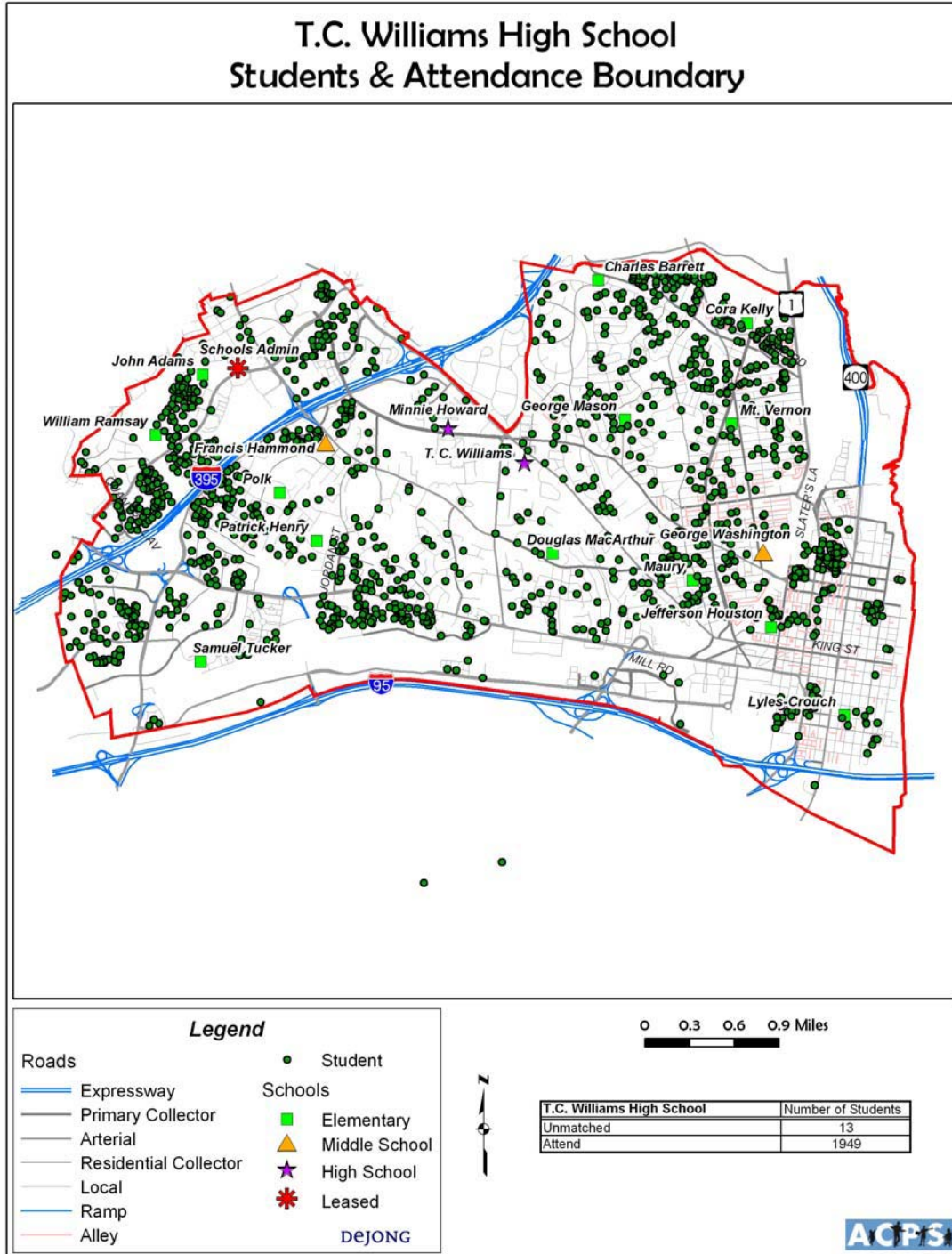
Grade	2006-07	2007-08	2008-09	2009-10	2010-11	2011-12	2012-13	2013-14	2014-15	2015-16
9	18	18	17	16	16	14	14	13	14	14
10	778	732	731	663	624	613	560	568	527	536
11	565	636	598	598	543	511	501	458	465	431
12	558	476	536	504	503	457	430	422	386	391
SCSE	0	0	0	0	0	0	0	0	0	0
Grand Total	1,919	1,862	1,882	1,781	1,686	1,595	1,505	1,461	1,392	1,372

Source: DeJONG

TC Williams High School Historical Enrollment and Moderate Projected Enrollment



The following map shows the distribution of students attending T.C. Williams High School.





STEP (Secondary Training and Education Program)

Based on the moderate projection, STEP will decrease by 4 students by the 2015-16 school year. The yellow bars of the graph indicate historical enrollment for STEP; the blue bars show the moderate, or most likely, enrollment projection for this school.

Secondary Training and Education Program (STEP)- Historical Enrollment

Grade	1996-97	1997-98	1998-99	1999-00	2000-01	2001-02	2002-03	2003-04	2004-05	2005-06
9	22	26	7	4	11	6	9	2	2	1
10	28	23	31	18	48	45	32	29	33	35
11	42	40	37	39	31	20	40	16	36	30
12	14	20	27	30	24	23	25	18	26	24
9 - 12 Total	106	109	102	91	114	94	106	65	97	90

Source: Alexandria City Public Schools

Secondary Training and Education Program (STEP) Center Projected Enrollment - Moderate

Grade	2006-07	2007-08	2008-09	2009-10	2010-11	2011-12	2012-13	2013-14	2014-15	2015-16
9	2	2	2	2	2	2	2	2	2	2
10	37	36	36	34	33	34	32	33	31	32
11	29	34	32	33	31	30	31	29	30	28
12	26	24	28	26	27	25	24	25	24	24
9 - 12 Total	94	96	98	95	93	91	89	89	87	86

Secondary Training and Education Program (STEP) Center Projected Enrollment - High

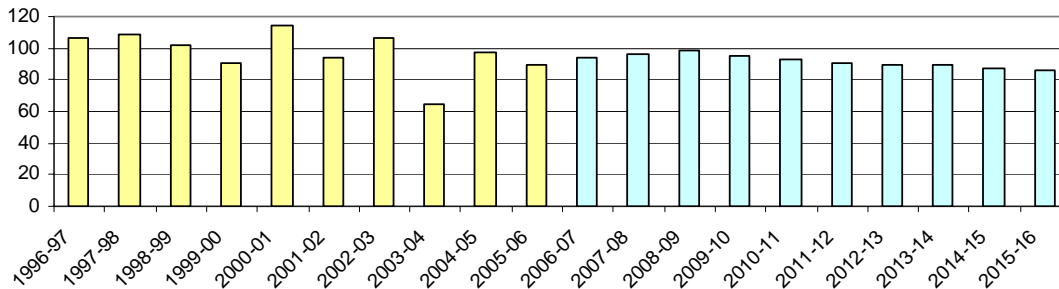
Grade	2006-07	2007-08	2008-09	2009-10	2010-11	2011-12	2012-13	2013-14	2014-15	2015-16
9	2	2	2	2	2	2	2	2	2	2
10	38	36	37	35	35	36	34	35	34	36
11	30	36	34	35	33	32	33	32	33	31
12	26	25	29	28	29	27	26	27	26	27
9 - 12 Total	96	99	102	100	99	97	95	96	95	96

Secondary Training and Education Program (STEP) Center Projected Enrollment - Low

Grade	2006-07	2007-08	2008-09	2009-10	2010-11	2011-12	2012-13	2013-14	2014-15	2015-16
9	2	2	2	2	2	2	2	2	2	2
10	36	34	34	31	29	29	26	27	25	25
11	27	31	29	29	26	25	24	22	22	21
12	25	21	24	22	22	20	19	19	17	17
9 - 12 Total	90	88	89	84	79	76	71	70	66	65

Source: DeJONG

STEP Historical Enrollment and Moderate Projected Enrollment





Interim Education Program

Based on the moderate projection, Interim Education Program will grow by 3 students by the 2015-16 school year. The yellow bars of the graph indicate historical enrollment for the Interim Education Program; the blue bars show the moderate, or most likely, enrollment projection for this school.

Interim Education Program - Historical Enrollment

Grade	1996-97	1997-98	1998-99	1999-00	2000-01	2001-02	2002-03	2003-04	2004-05	2005-06
6							0	0	0	1
7							1	1	3	3
8							2	3	1	1
9							1	4	1	0
10							0	2	0	3
11							3	1	1	2
12							1	0	3	1
6 - 12 Total		0	0	0	0	0	0	8	11	9

Source: Alexandria City Public Schools

Interim Education Program Projected Enrollment - Moderate

Grade	2006-07	2007-08	2008-09	2009-10	2010-11	2011-12	2012-13	2013-14	2014-15	2015-16
6	1	1	1	1	1	1	1	1	1	1
7	3	3	3	2	2	2	2	3	2	3
8	2	2	2	2	2	2	2	2	2	2
9	2	2	2	2	2	2	2	2	2	2
10	2	2	2	2	2	2	2	2	2	2
11	2	2	2	2	2	2	2	2	2	2
12	2	2	2	2	2	2	2	2	2	2
6 - 12 Total	14	14	14	13	13	13	13	14	13	14

Interim Education Program Projected Enrollment - High

Grade	2006-07	2007-08	2008-09	2009-10	2010-11	2011-12	2012-13	2013-14	2014-15	2015-16
6	1	1	1	1	1	1	1	1	1	1
7	3	3	3	3	3	3	3	3	3	3
8	2	2	2	2	2	2	2	2	2	2
9	2	2	2	2	2	2	2	2	2	2
10	2	2	2	2	2	2	2	2	2	2
11	2	2	2	2	2	2	2	2	2	2
12	2	2	2	2	2	2	2	2	2	2
6 - 12 Total	14	14	14	14	14	14	14	14	14	14

Interim Education Program Projected Enrollment - Low

Grade	2006-07	2007-08	2008-09	2009-10	2010-11	2011-12	2012-13	2013-14	2014-15	2015-16
6	1	1	1	1	1	1	1	1	1	1
7	3	3	2	2	2	2	2	2	2	2
8	2	2	2	2	2	2	2	2	2	2
9	2	2	2	2	2	2	2	2	2	2
10	2	2	2	2	2	2	2	2	2	2
11	2	2	2	2	2	1	1	1	1	1
12	2	2	2	2	2	2	1	1	1	1
6 - 12 Total	14	14	13	13	13	12	11	11	11	11

Source: DeJONG

Interim Education Program Historical Enrollment and Moderate Projected Enrollment

