

Youth Substance Use and Violence Data (2006)

**A Presentation to the:
Substance Abuse Education and Violence
Prevention Advisory Committee**

June 5, 2007

**Monitoring and Evaluation
*Alexandria City Public School***

Search Institute: Developmental Assets Survey

- Youth self-report survey
 - 100 items focus on strengths in youth, their families, schools, peer groups, and neighborhoods
 - 36 items assess deficits and engagement in risky behaviors
- Today's presentation: prevalence data for substance use/abuse and violent behaviors
- Future data analyses will examine:
 - The co-occurrence of risk behaviors
 - Which assets are linked to lower levels of substance use and violence

Who was surveyed?

ACPS youth

- Grades 7-12
- N = 3,041
 - Males = 46%
 - Females = 54%

 - Native American = 1%
 - Asian = 7%
 - Black = 37%
 - Hispanic = 22%
 - White = 22%
 - Multi-racial = 11%

Categories of Risk Behaviors

- **Substance use** (alcohol, binge drinking, inhalents, marijuana, etc.)
- **Anti-social and Violent Behavior:** (shoplifting, vandalism, carrying a weapon)
- **Mental Health:** (eating disorders, depression, suicide)
- **Sexual Activity**
- **School Problems**

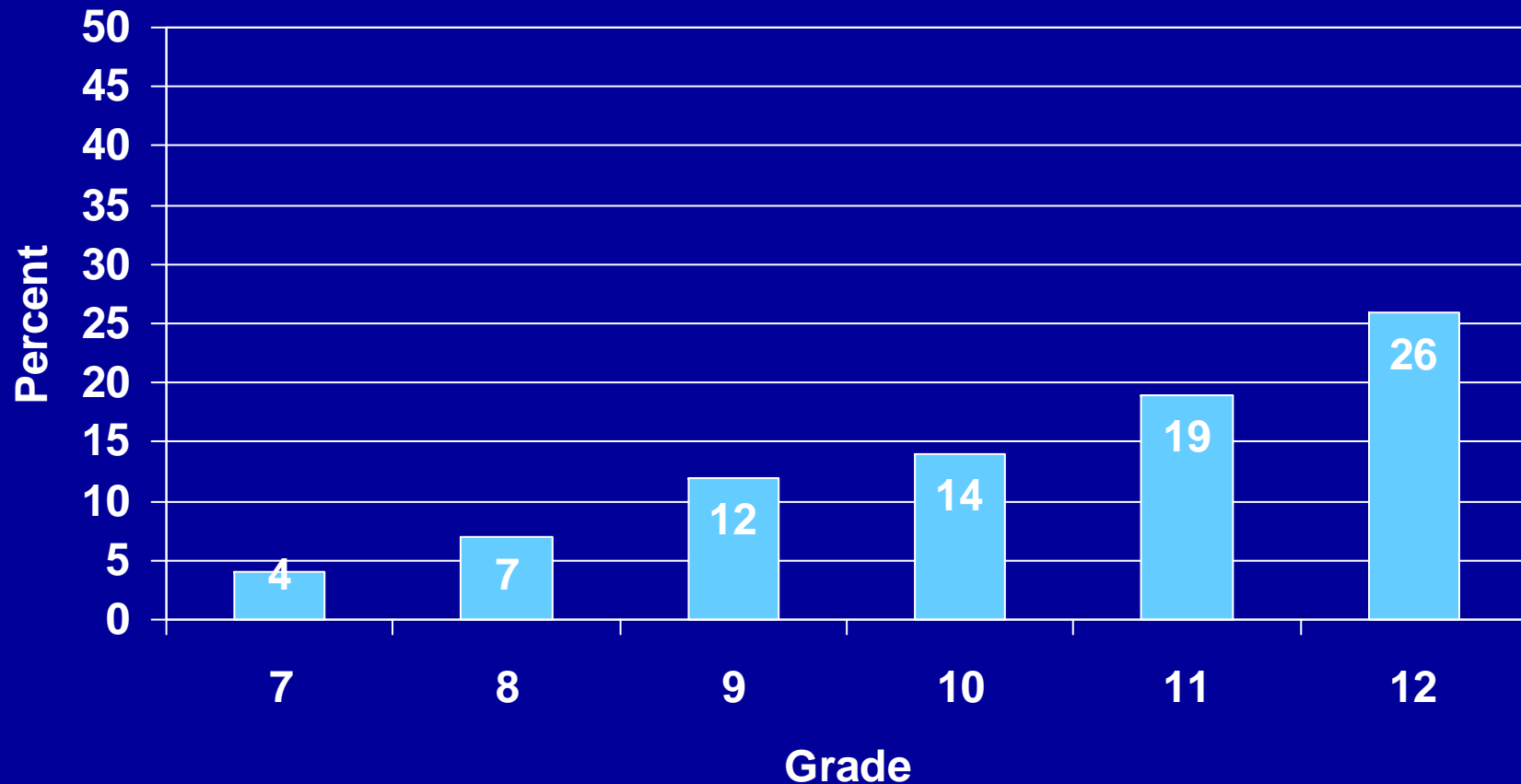
High Risk Behavior Patterns

1. Tobacco (5%)
- 2. Illicit drugs (13%)**
3. Gambling (15%)
- 4. Drinking and driving (15%)**
- 5. Alcohol (19%)**
6. School problems (24%)
7. Sexual intercourse (25%)
- 8. Anti-social behavior (26%)**
9. Depression/suicide (28%)
- 10. Violence (39%)**

Indicator: Illicit Drugs

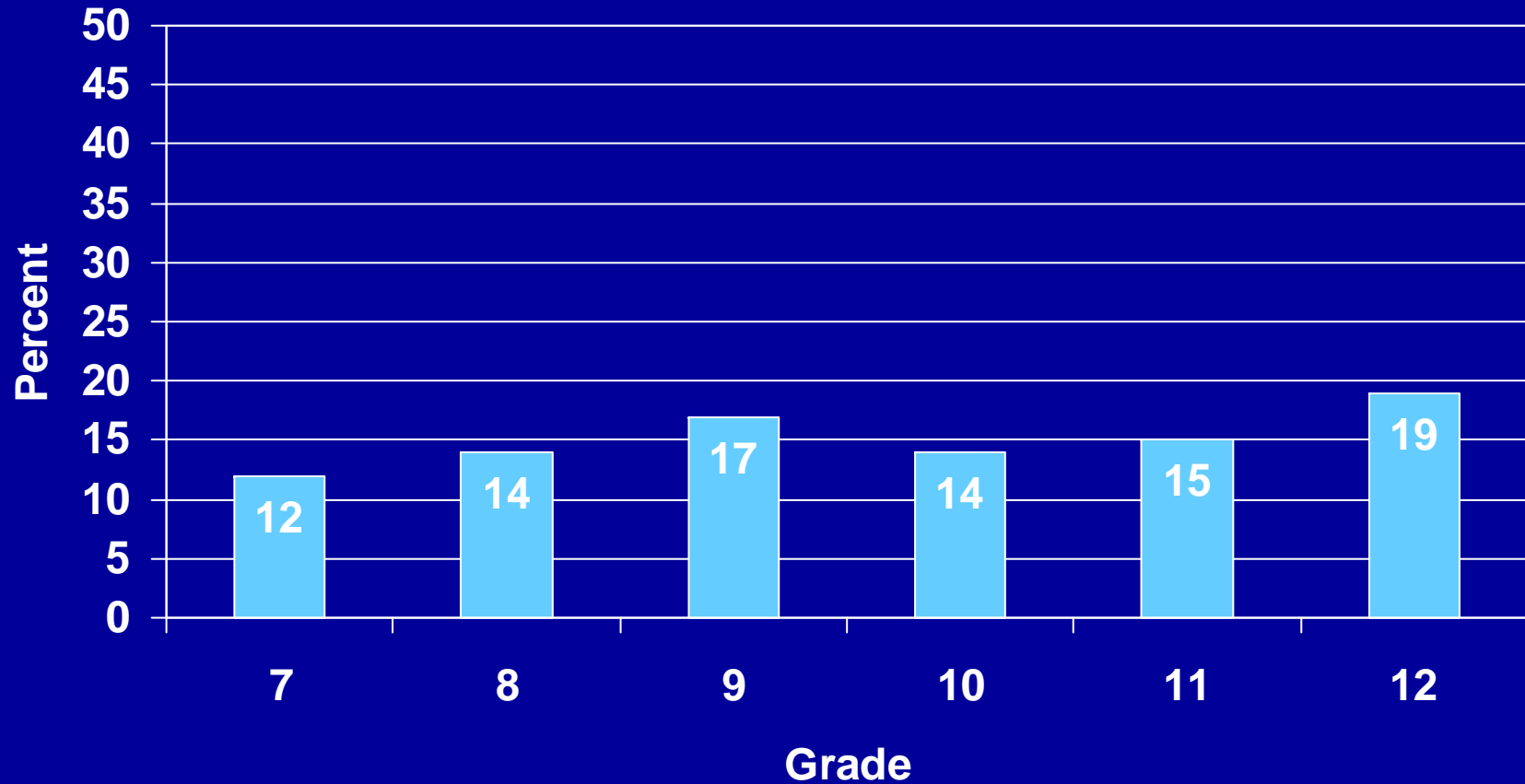
***3 or more times in last 12 months**

(marijuana, cocaine, LSD, PCP, heroin, amphetamines)



Indicator: Driving and Alcohol

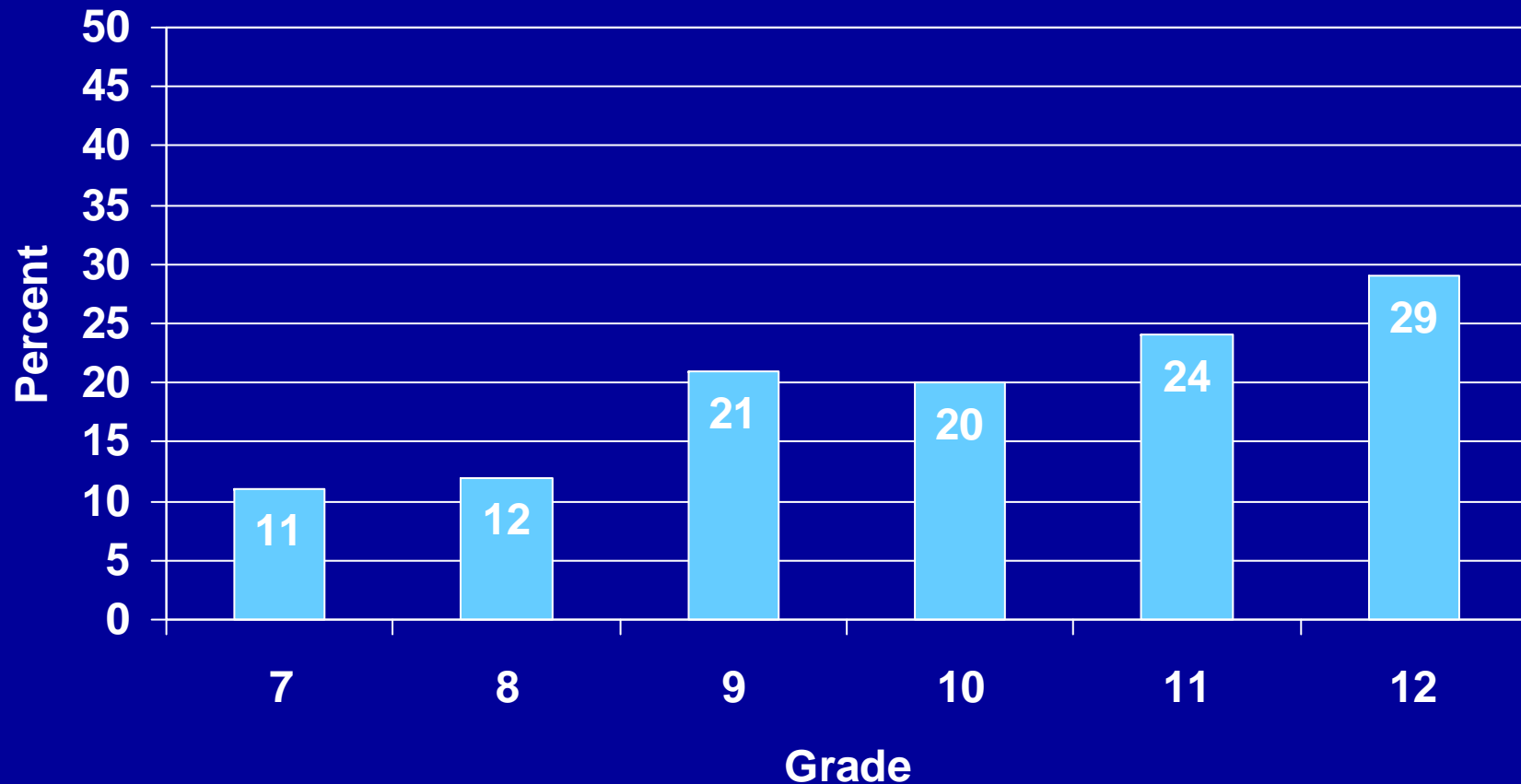
*3 or more times in last 12 months
(driver or passenger)



Indicator: Alcohol

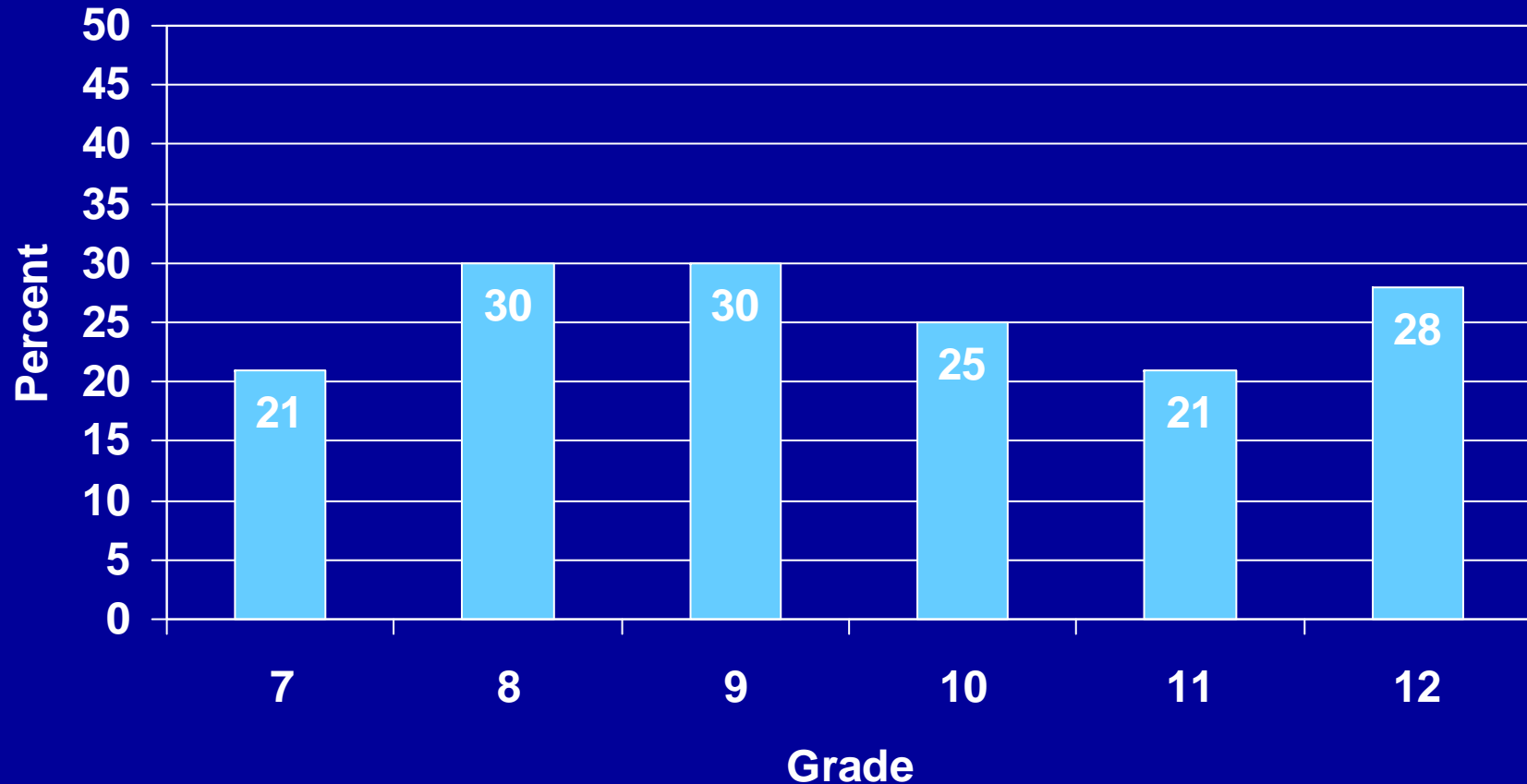
*3 or more times in last 30 days or

*drunk 1 or more times in last 2 weeks



Indicator: Anti-social behavior

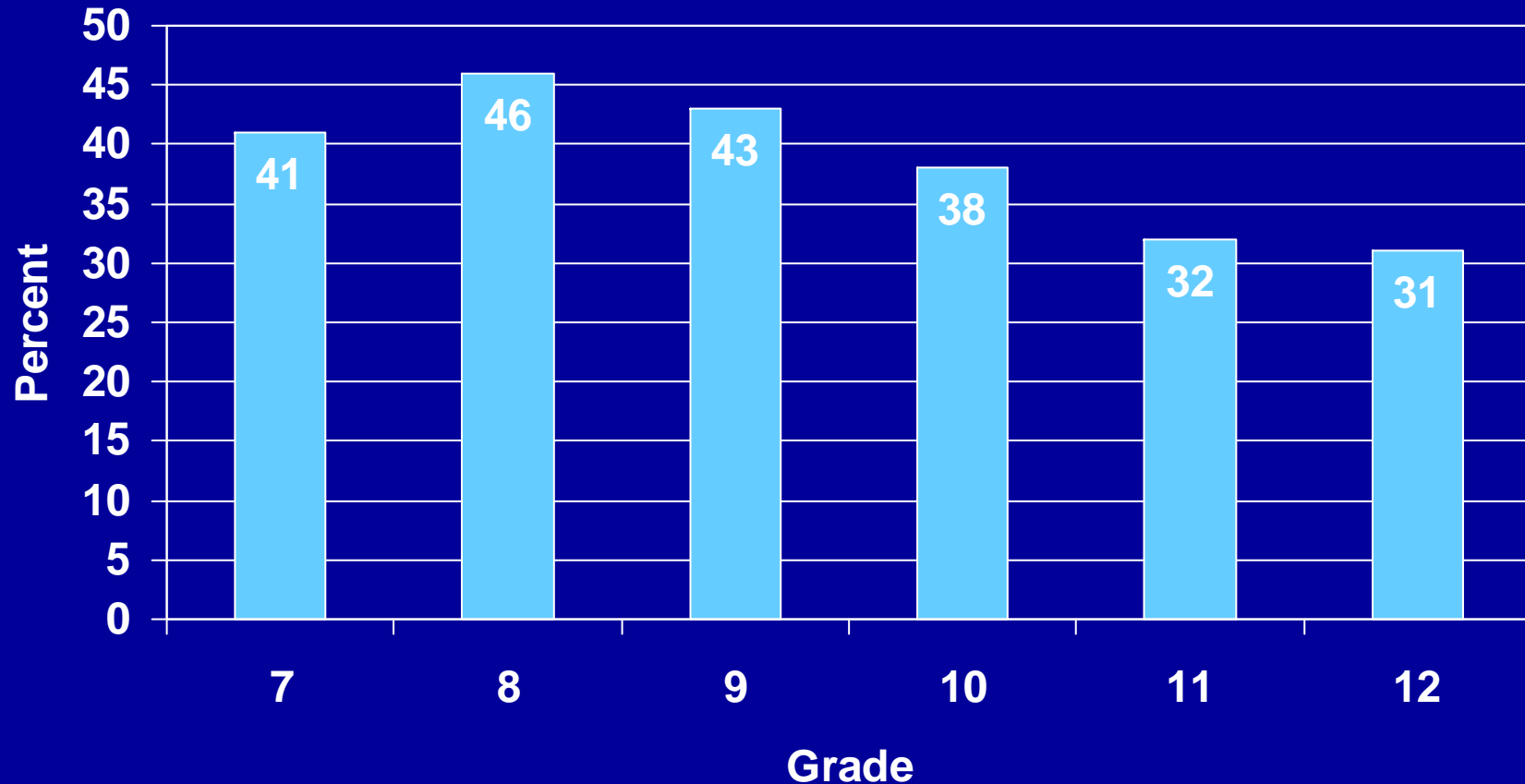
***3 or more incidents in last 12 months
(shoplifting, vandalism, trouble with police)**



Indicator: Violence

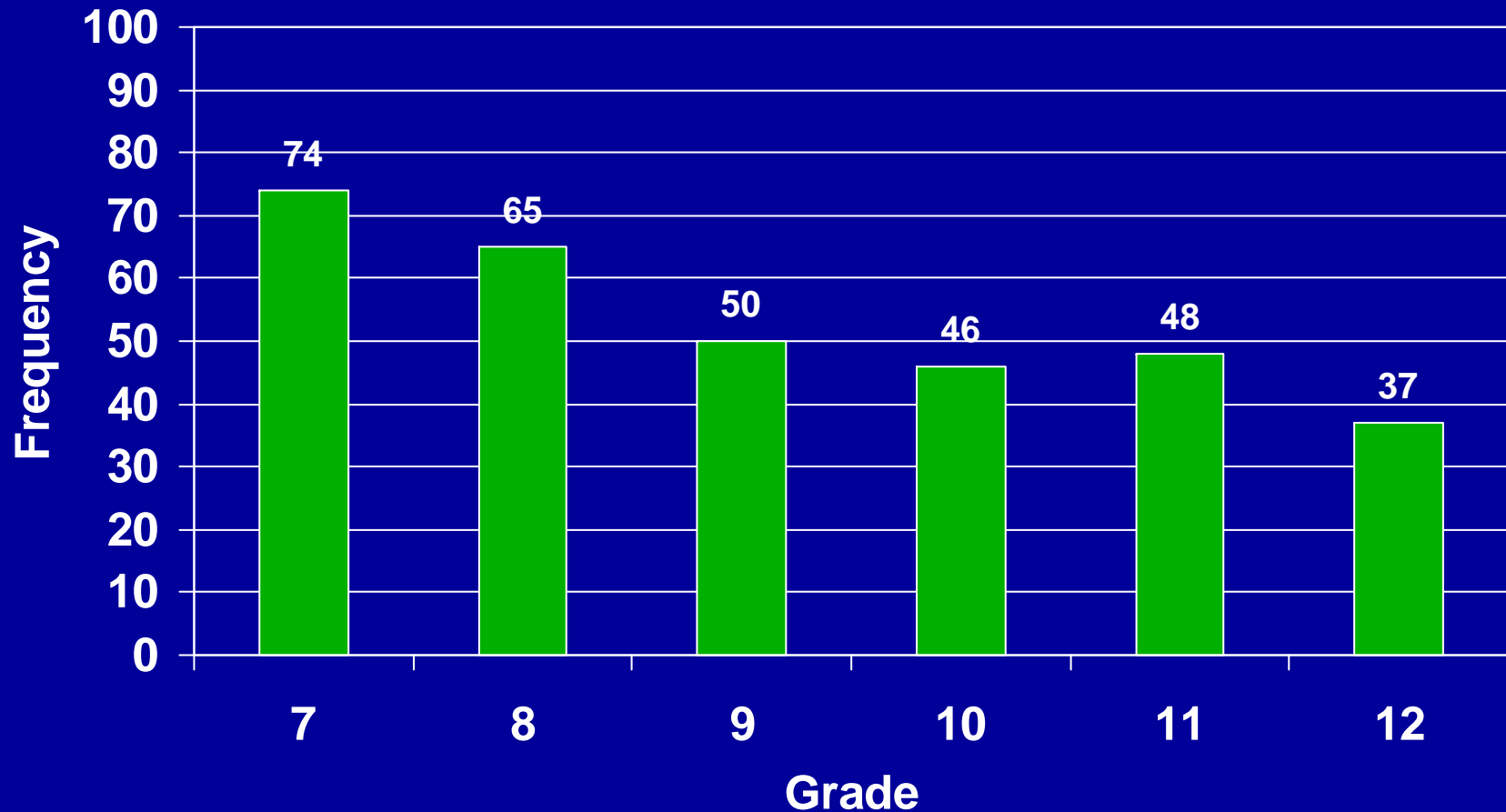
***3 or more acts in last 12 months**

(fighting, hitting, threatening or injuring a person, carrying or using a weapon)



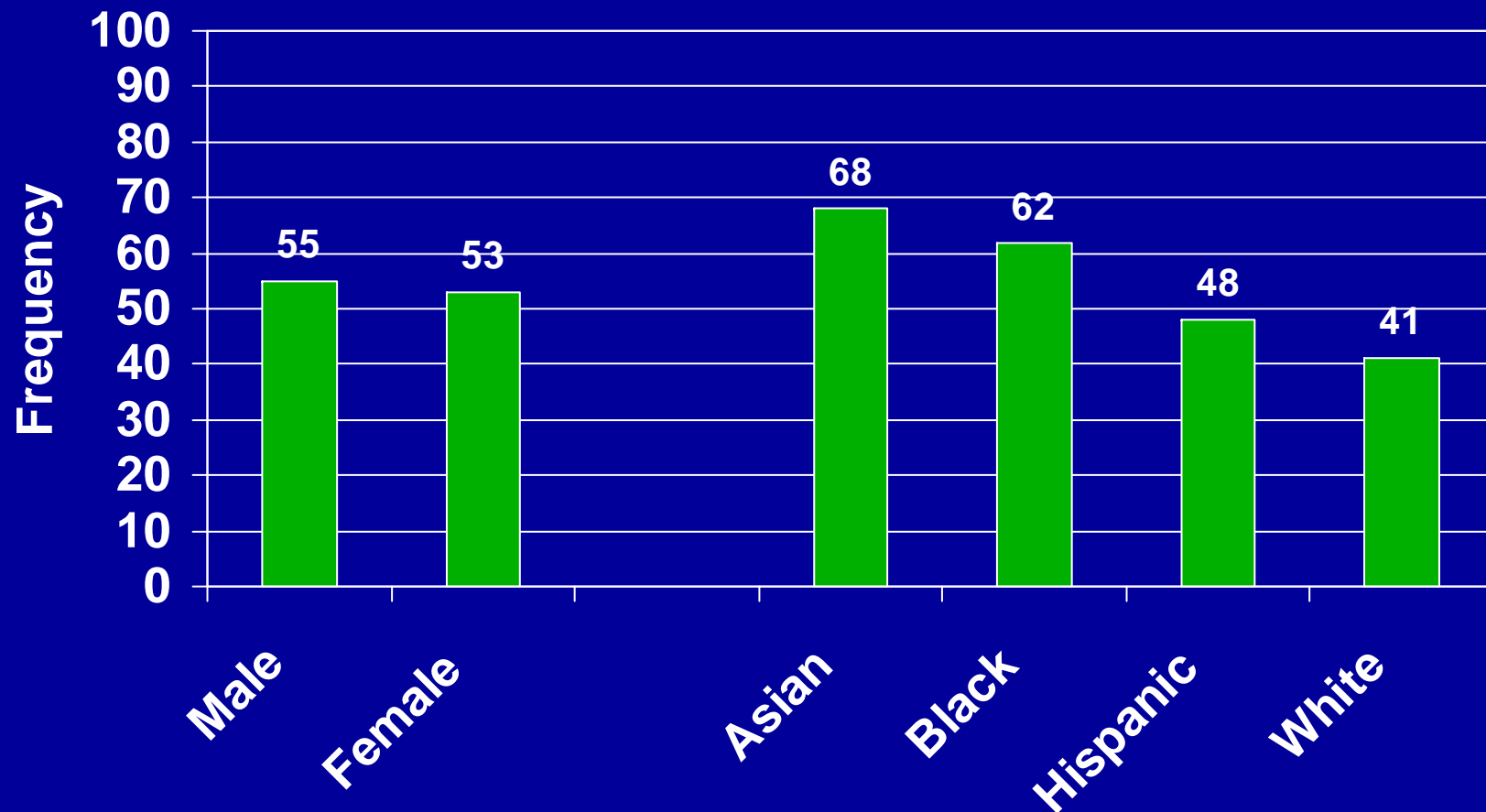
Values and Perceived Consequences

It is against my values to drink alcohol as a teenager.



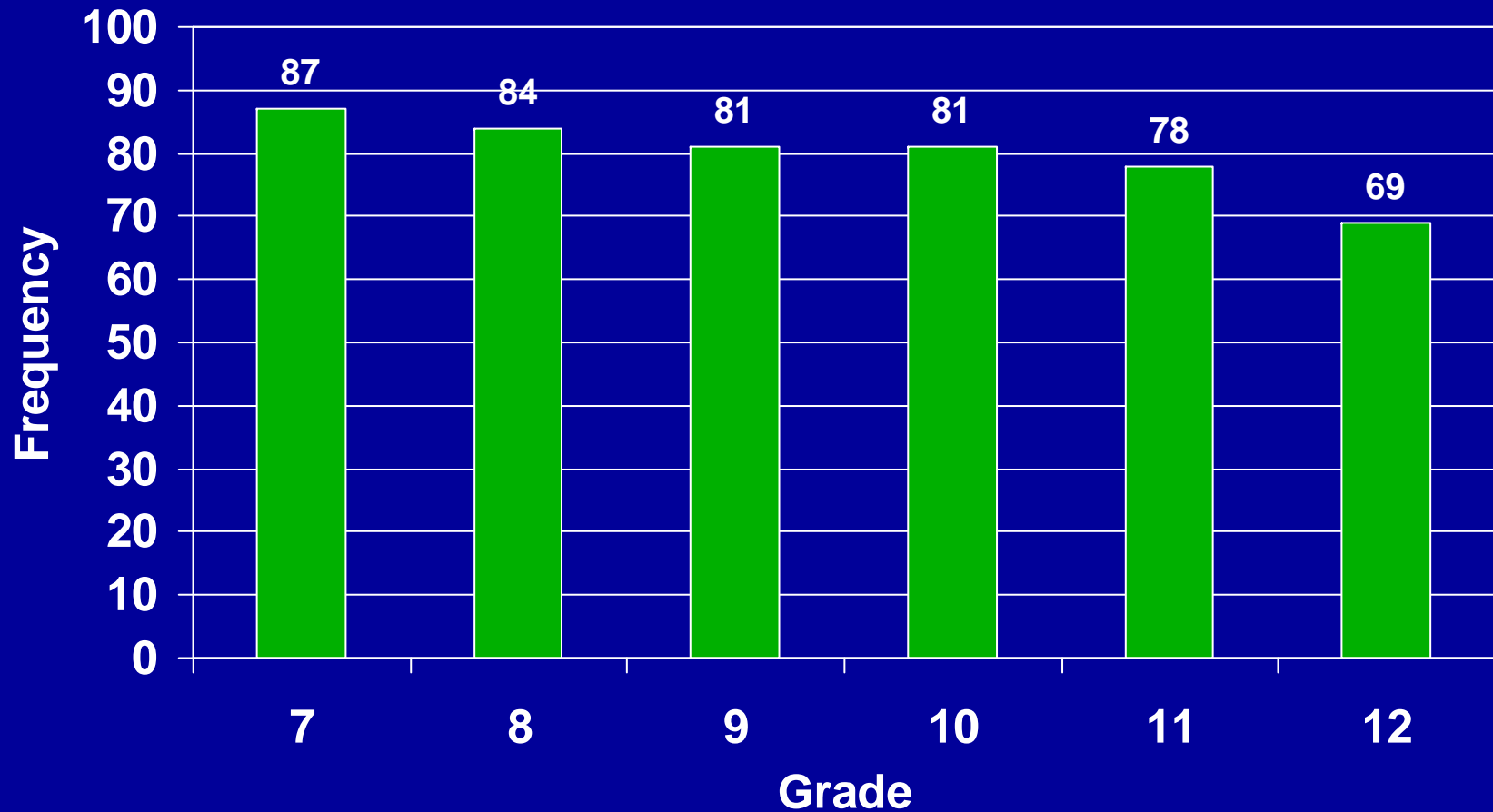
% Agree or Strongly Agree

It is against my values to drink alcohol as a teenager.



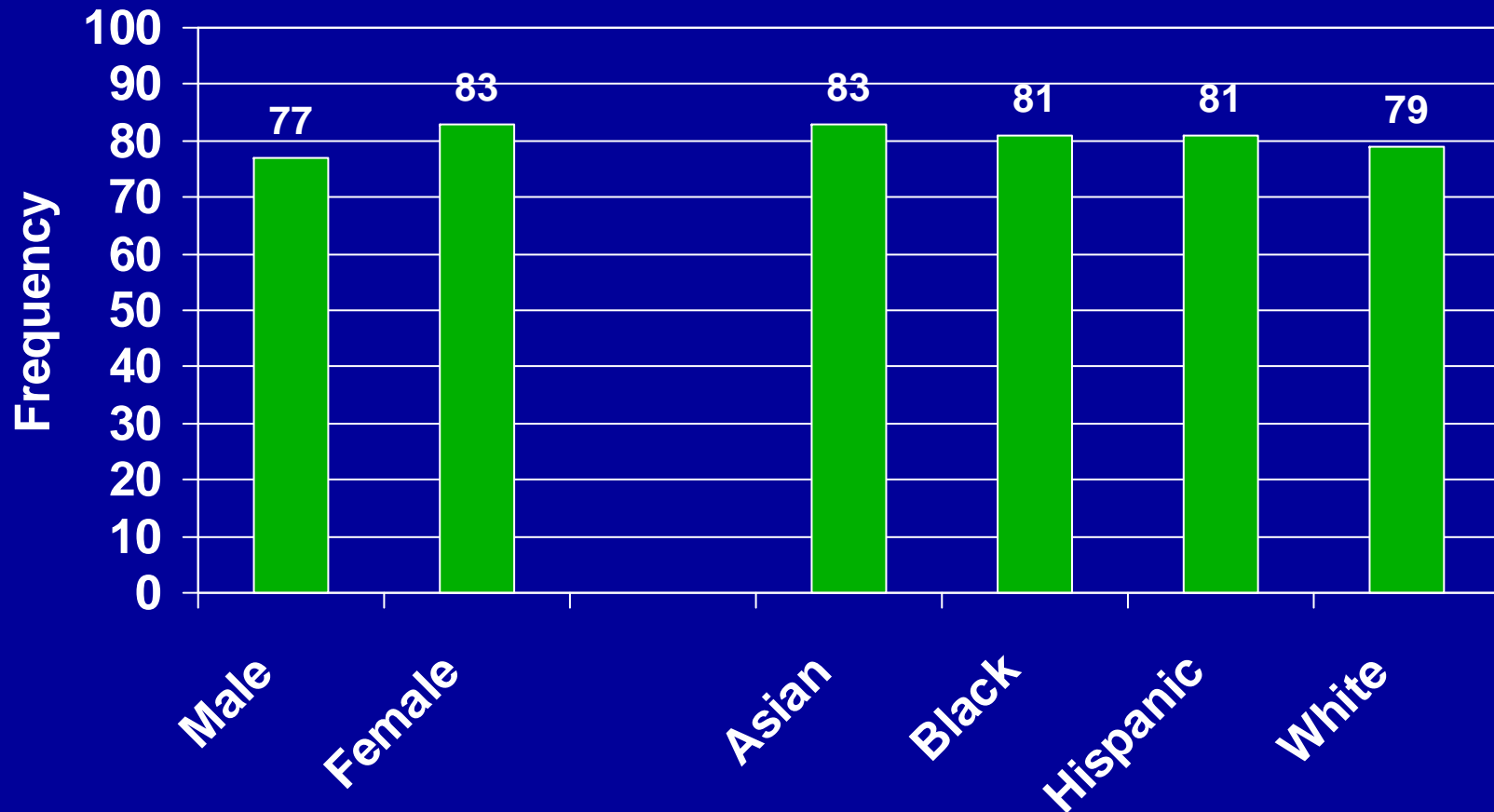
% Agree or Strongly Agree

How upset would your parents be if they found out you had been drinking at a party.



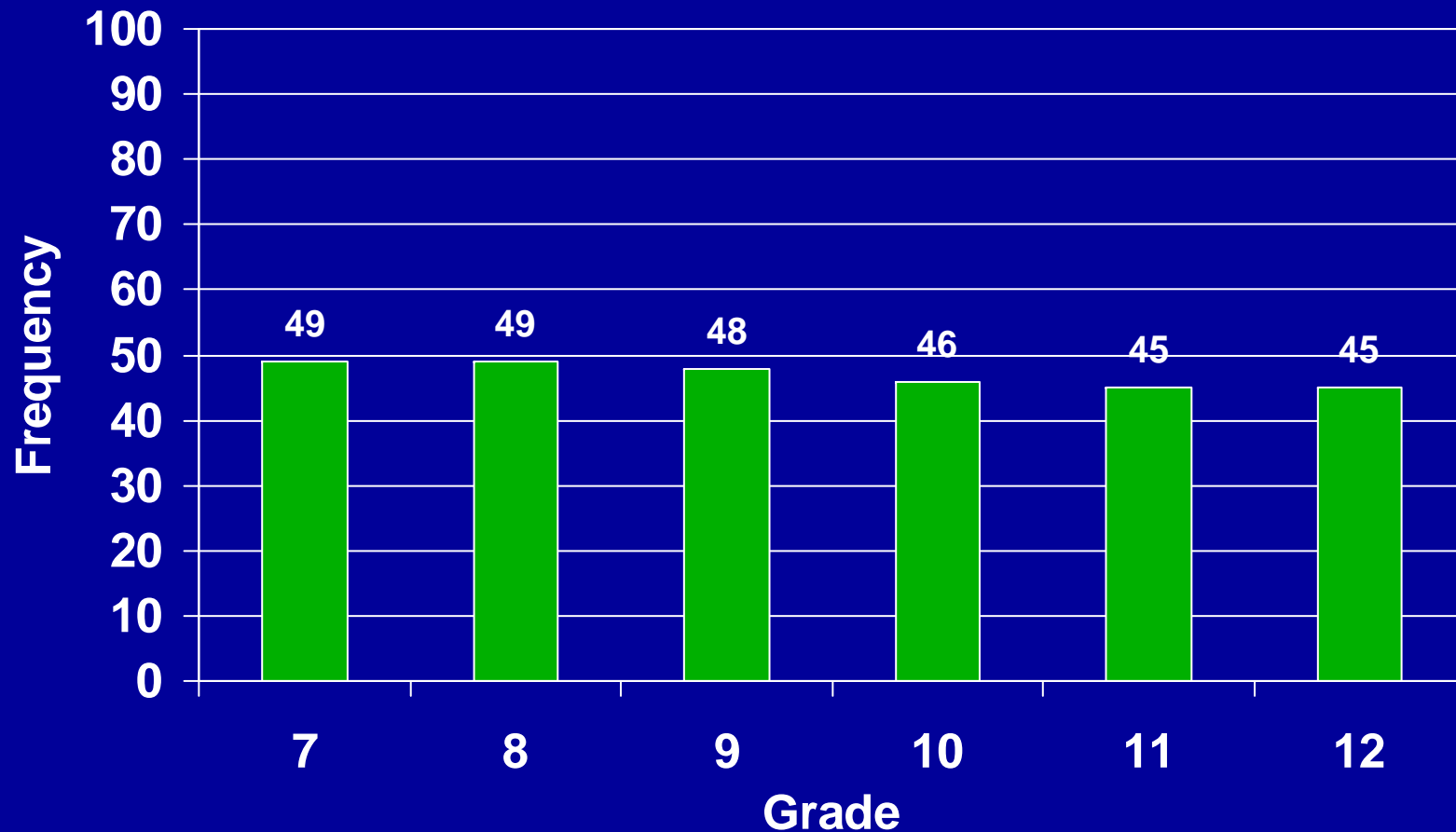
% Very or Extremely Upset

How upset would your parents be if they found out you had been drinking at a party.



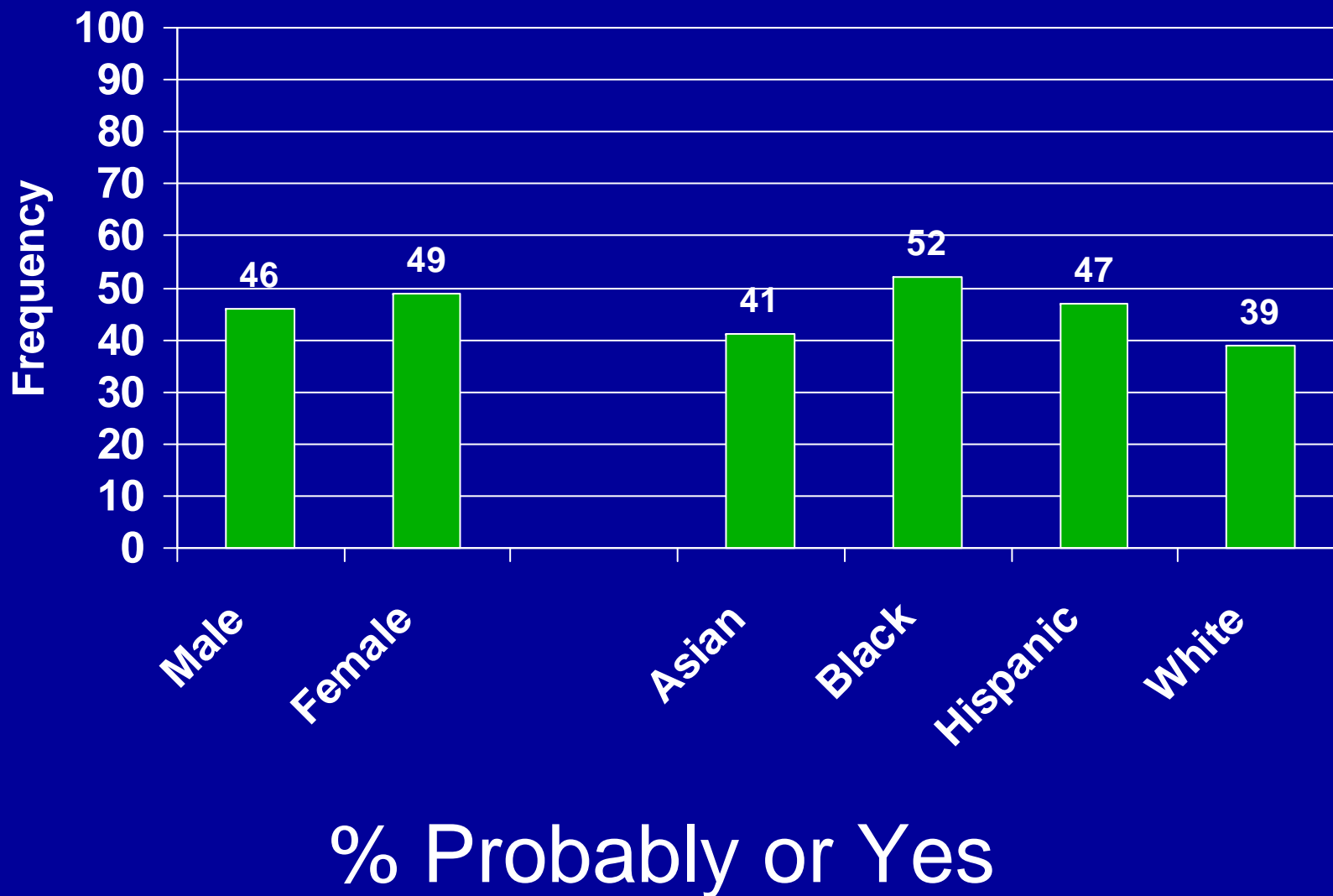
% Very or Extremely Upset

If you had an important concern about drugs/alcohol/serious issue, would you talk to your parents.

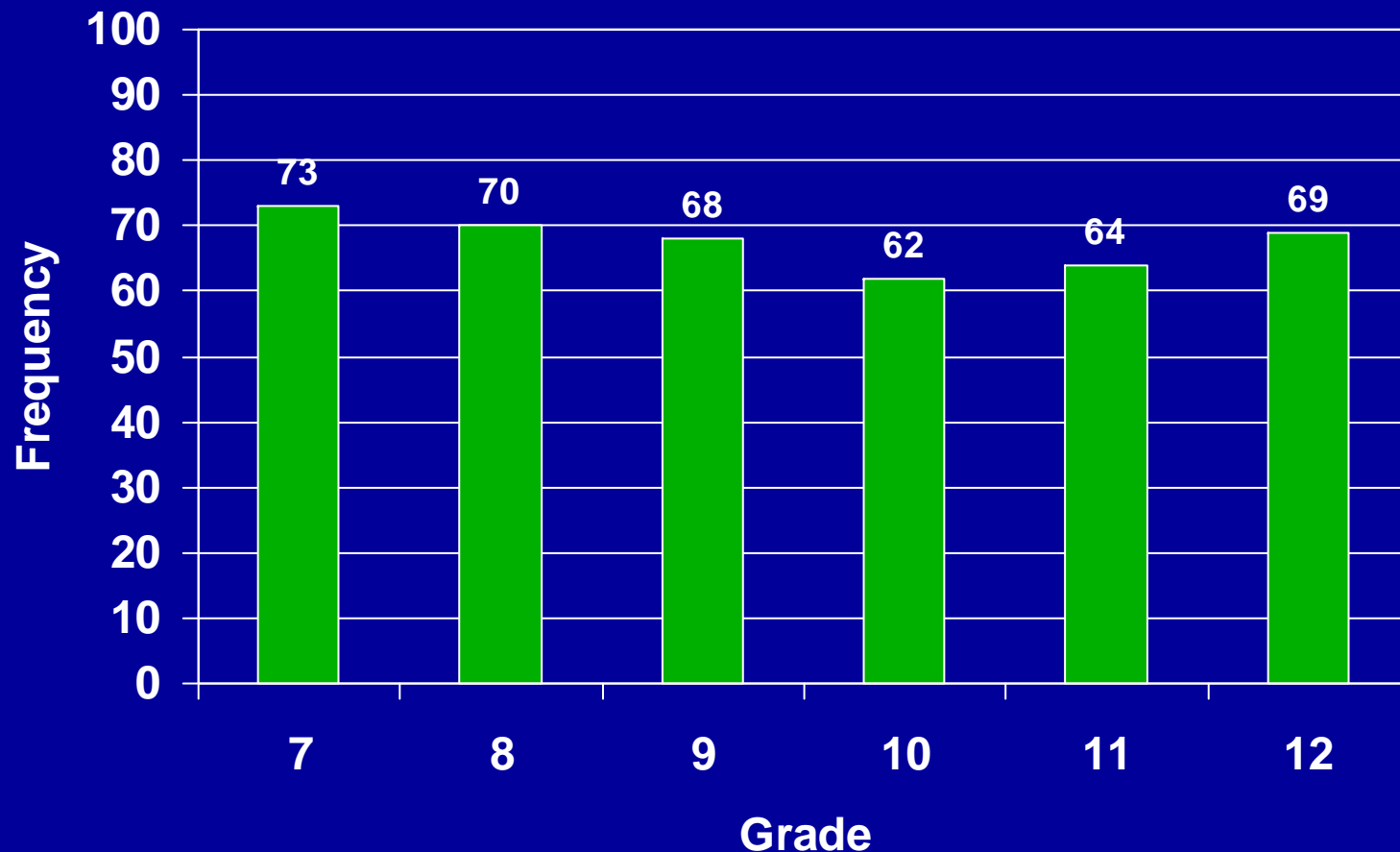


% Probably or Yes

If you had an important concern about drugs/alcohol/serious issue, would you talk to your parents.

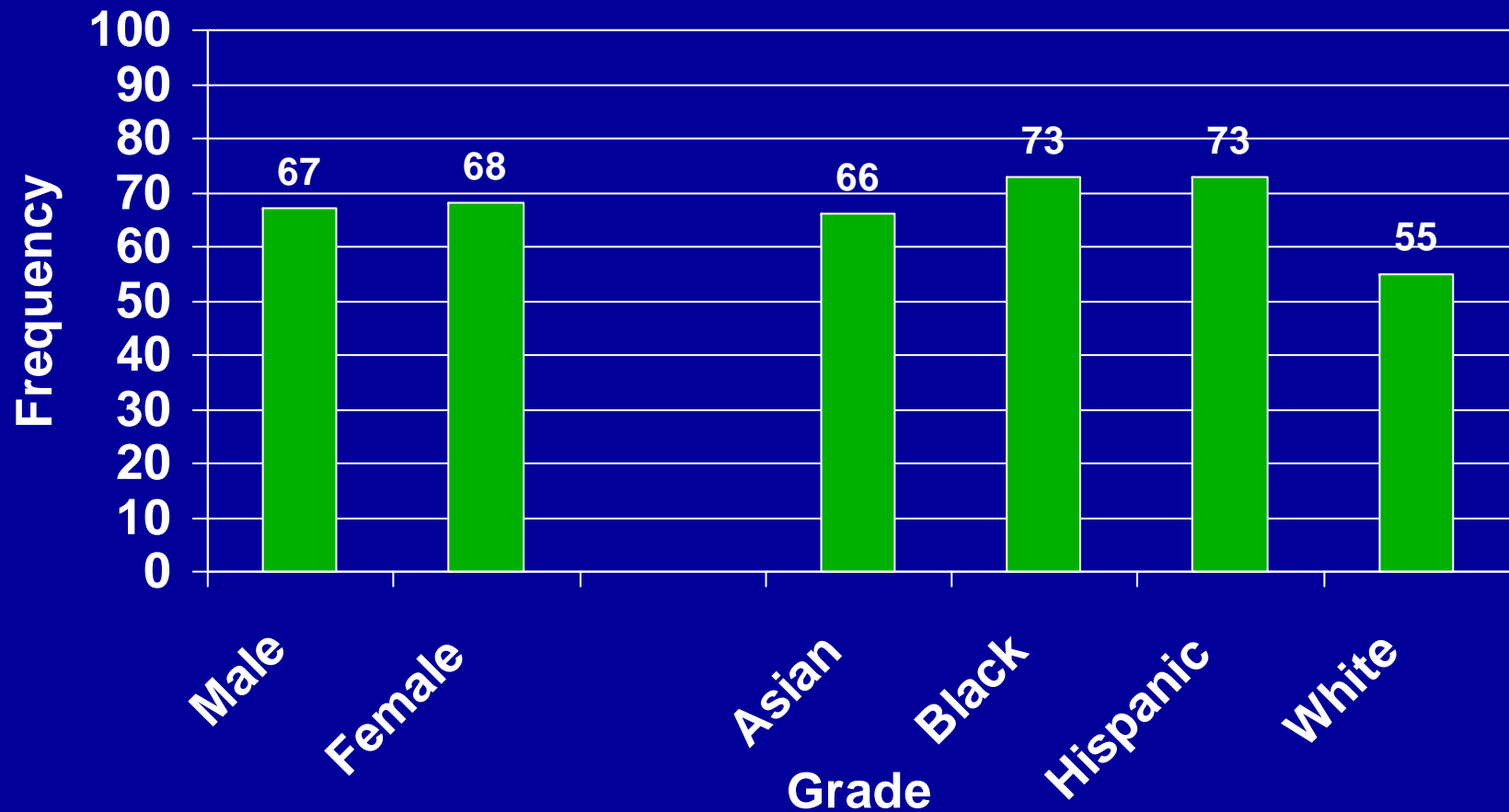


At my school, everyone knows that you'll get in trouble for using alcohol or other drugs.



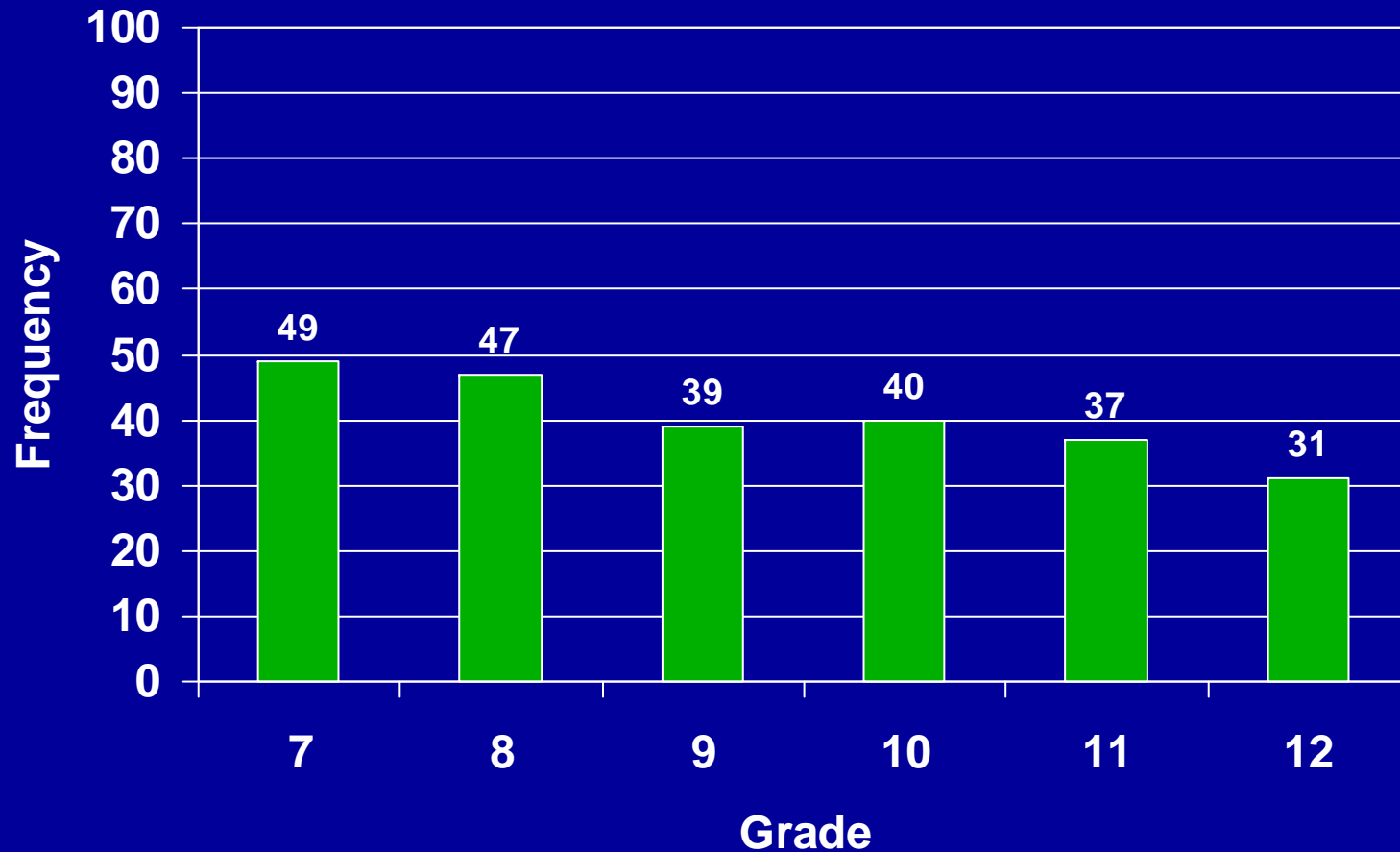
% Agree or Strongly Agree

At my school, everyone knows that you'll get in trouble for using alcohol or other drugs.



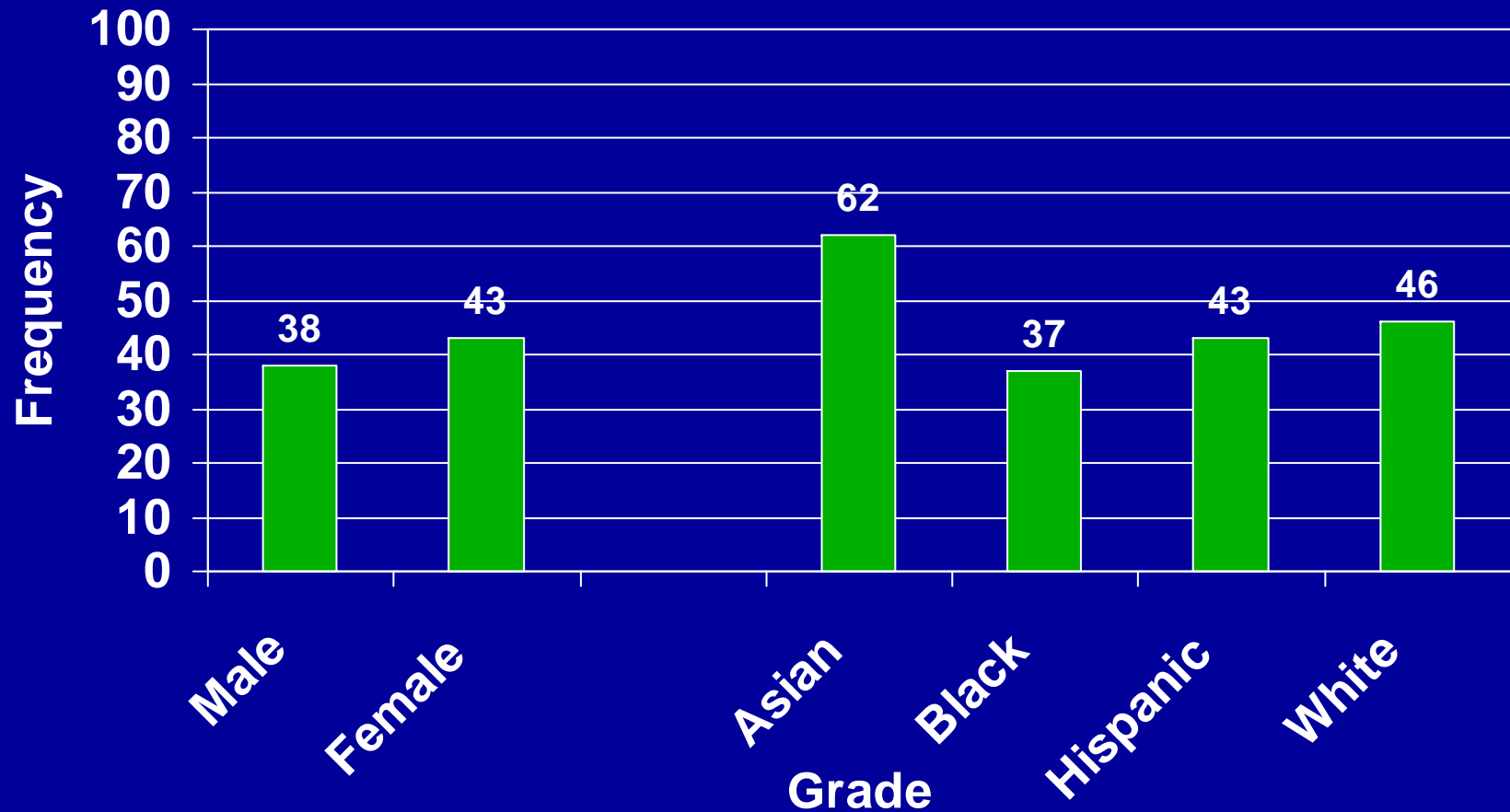
% Agree or Strongly Agree

If one of my neighbors saw me do something wrong, they would tell my parents.



% Agree or Strongly Agree

If one of my neighbors saw me do something wrong, they would tell my parents.



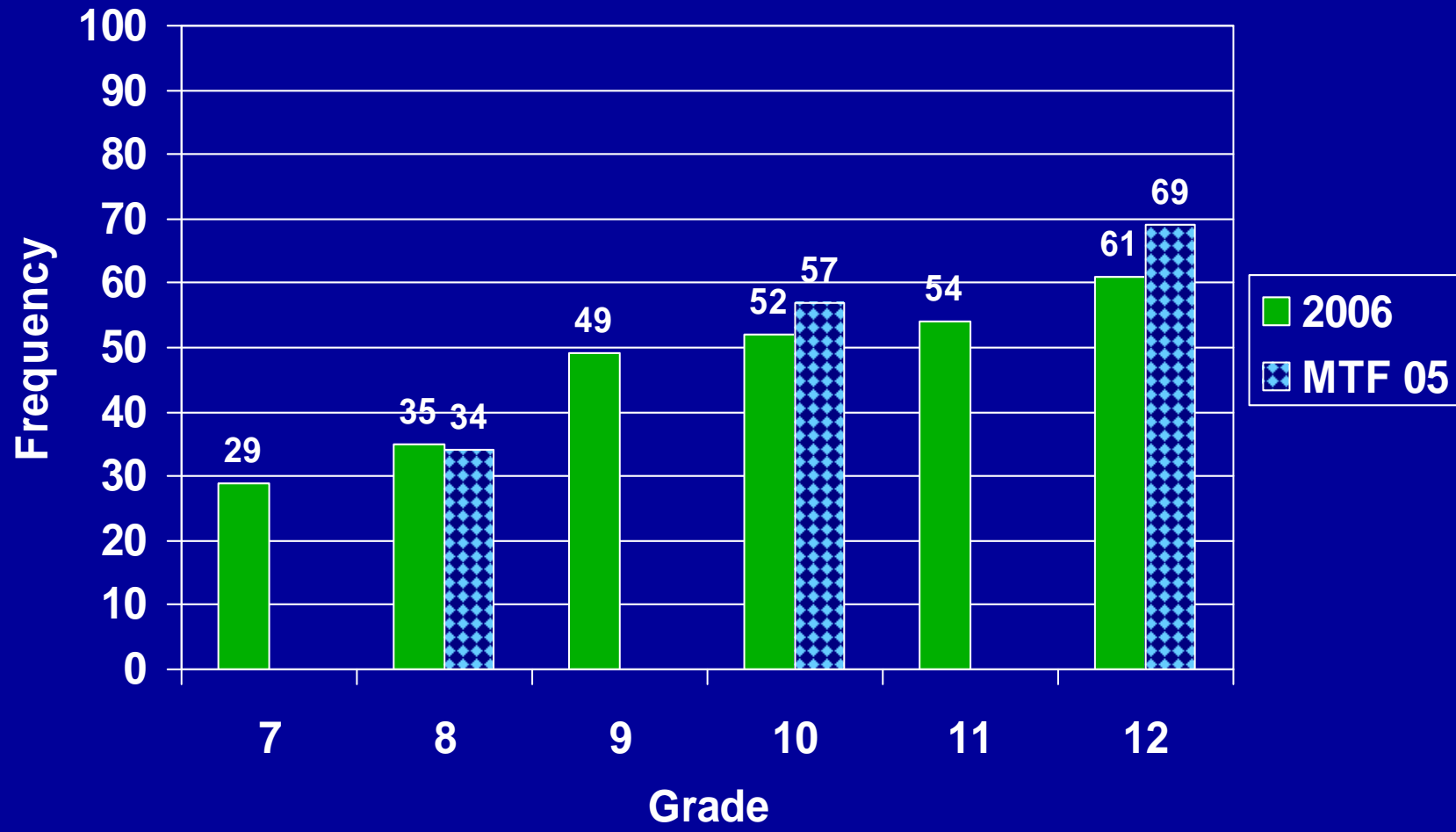
% Agree or Strongly Agree

Substance Use: Individual Indicators

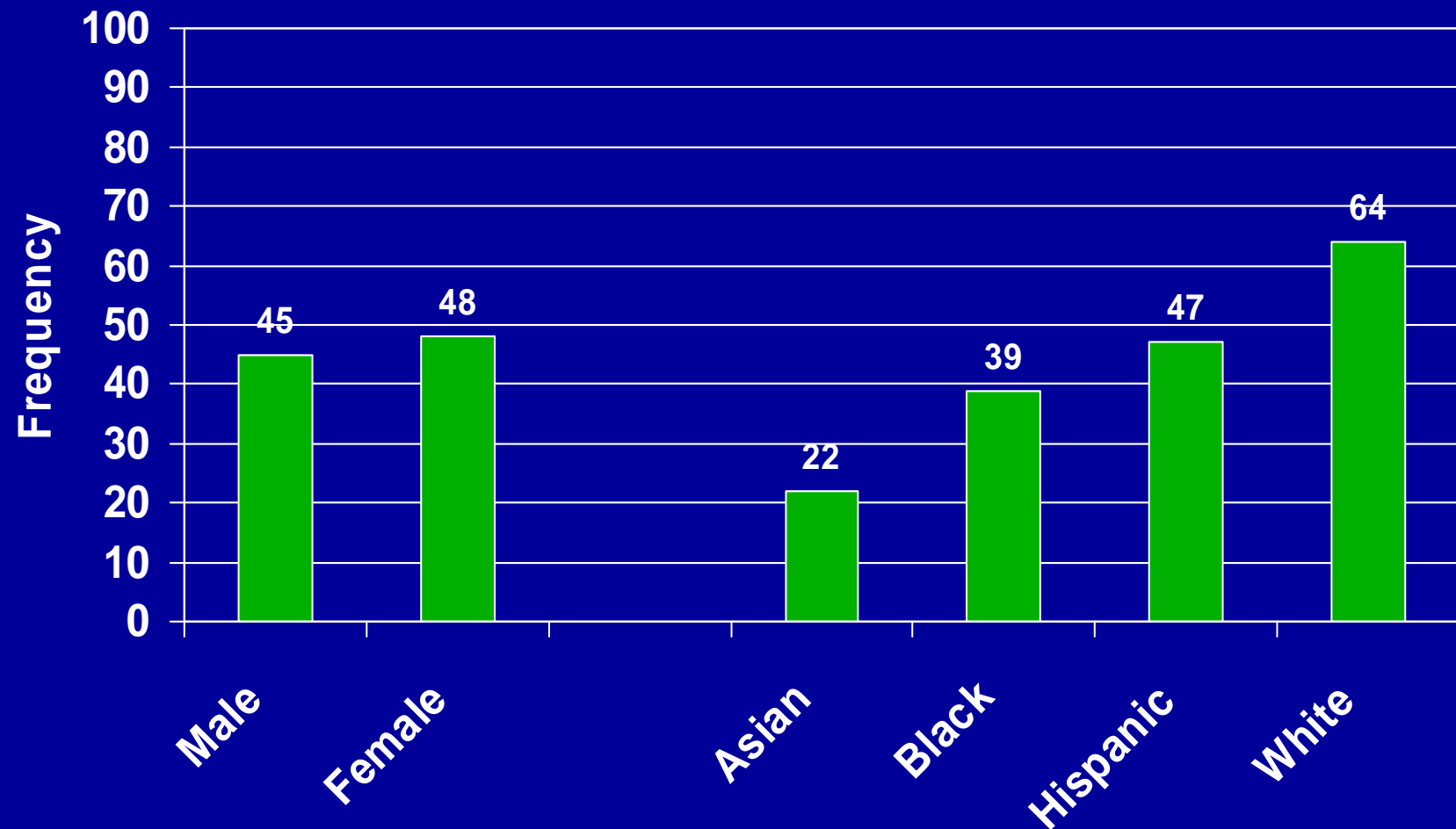
2006 Search Data

2005 Monitoring the Future
(national comparison data)

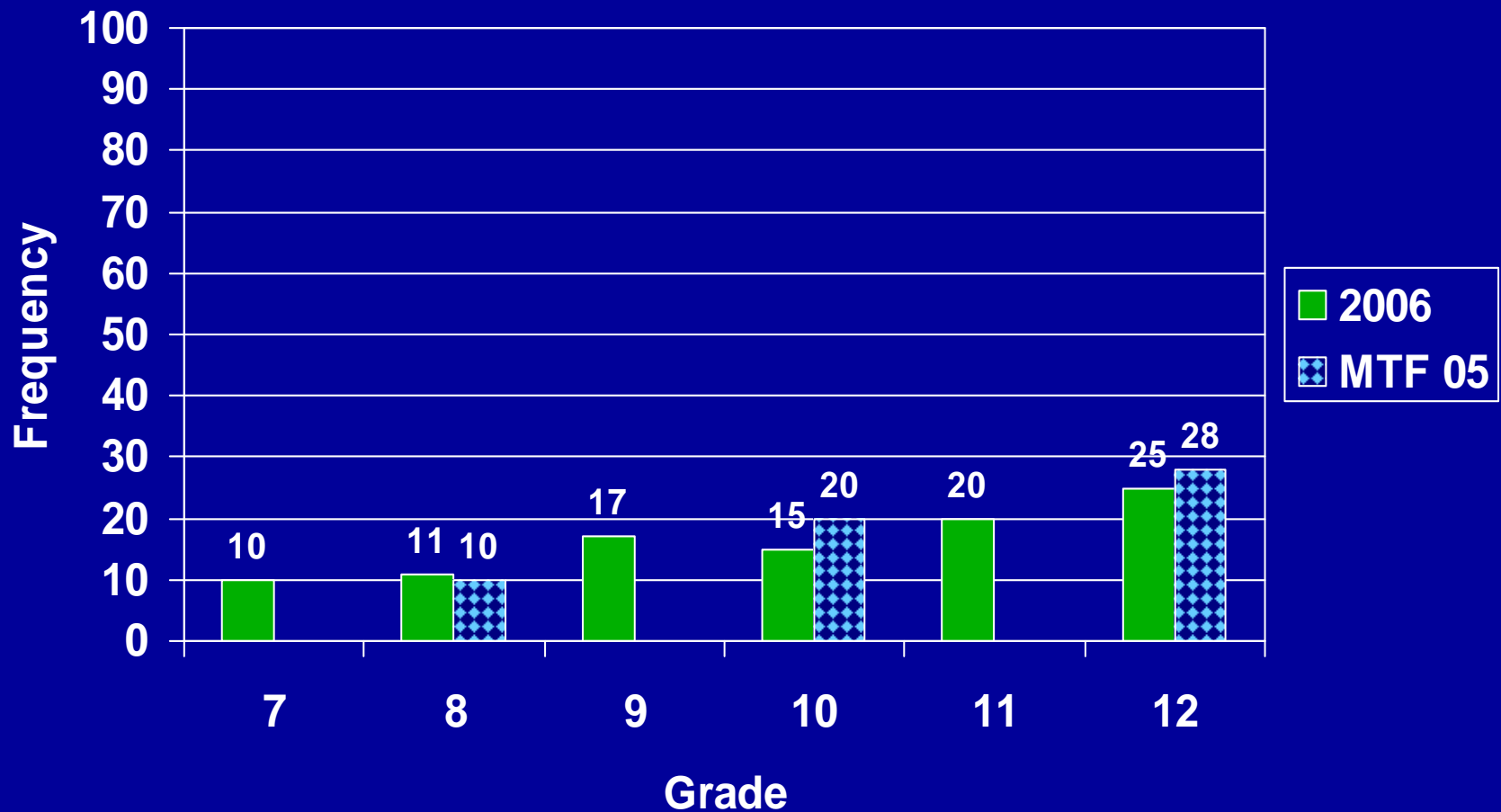
Drank alcohol one or more times in last 12 months.



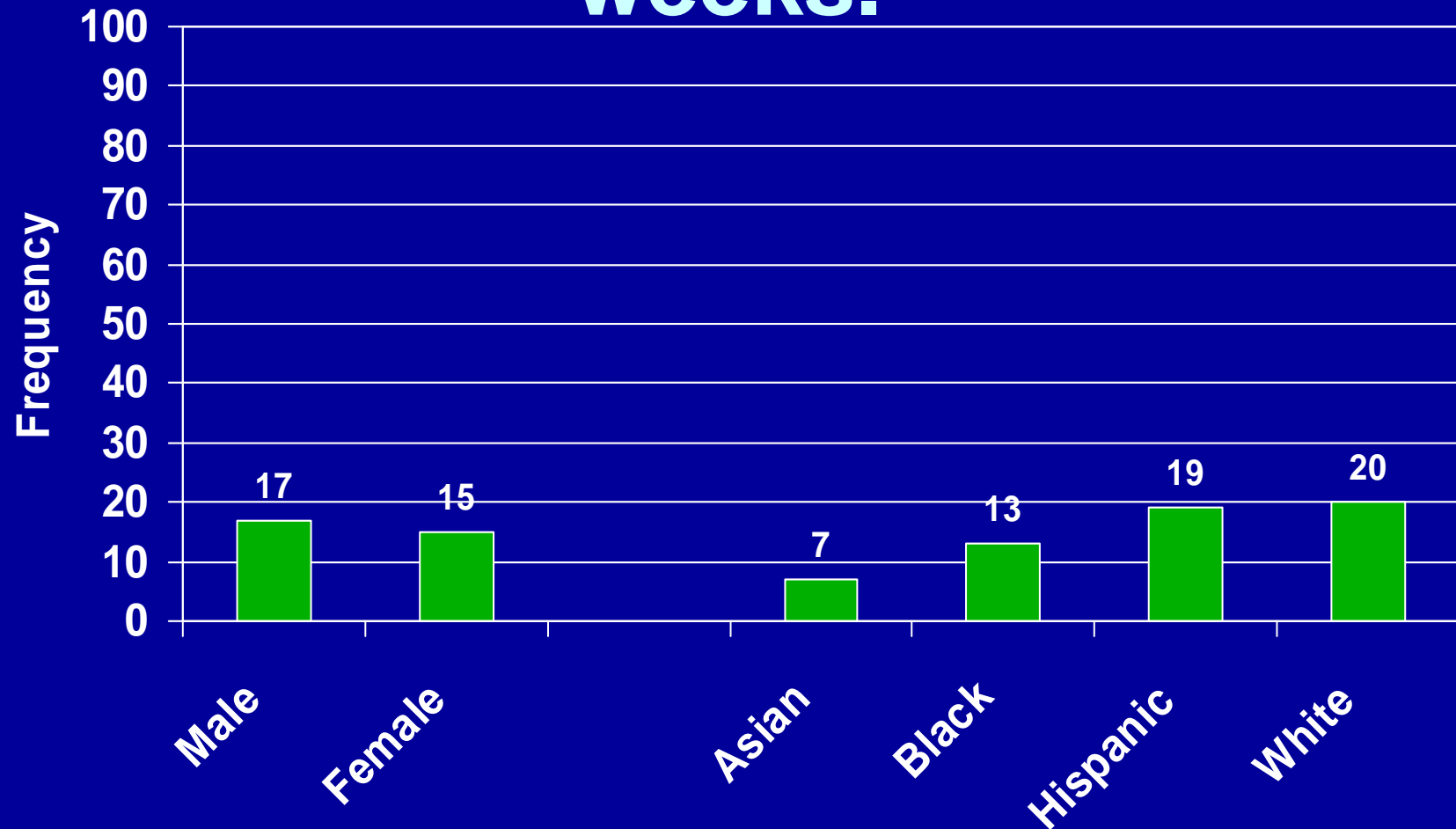
Drank alcohol one or more times in last 12 months.



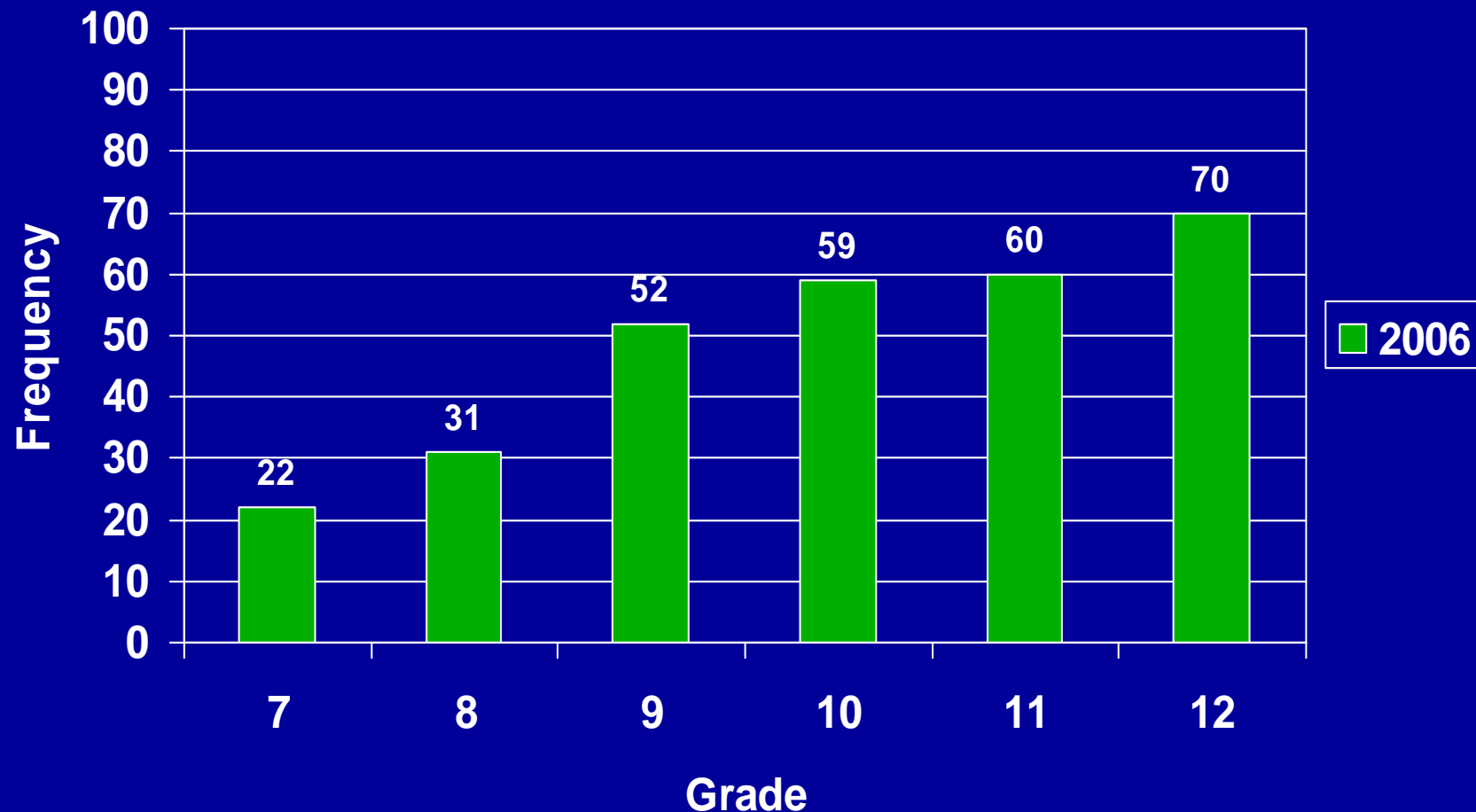
Drank 5 or more drinks, in a row, one or more times in the last two weeks.



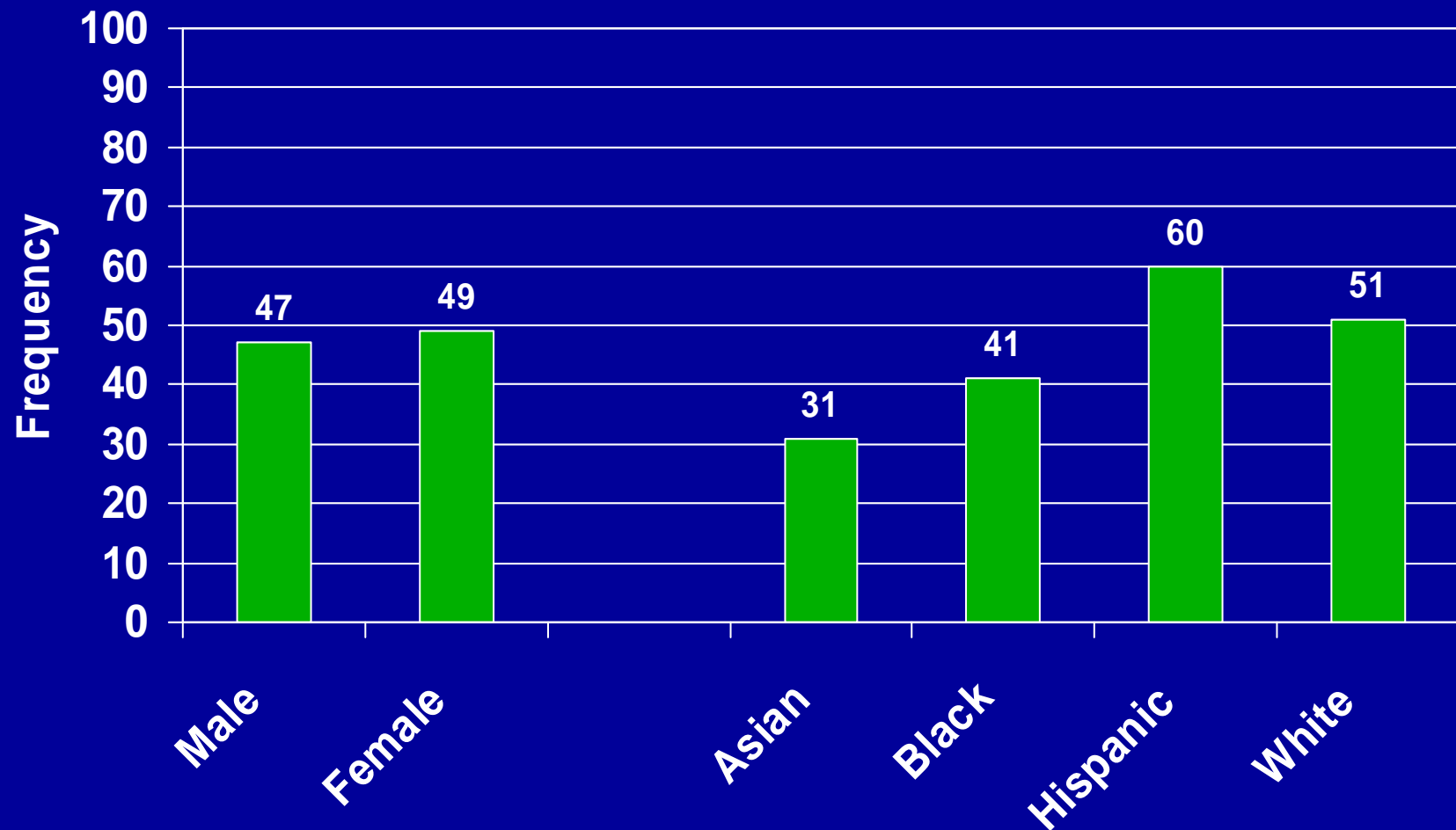
Drank 5 or more drinks, in a row, one or more times in the last two weeks.



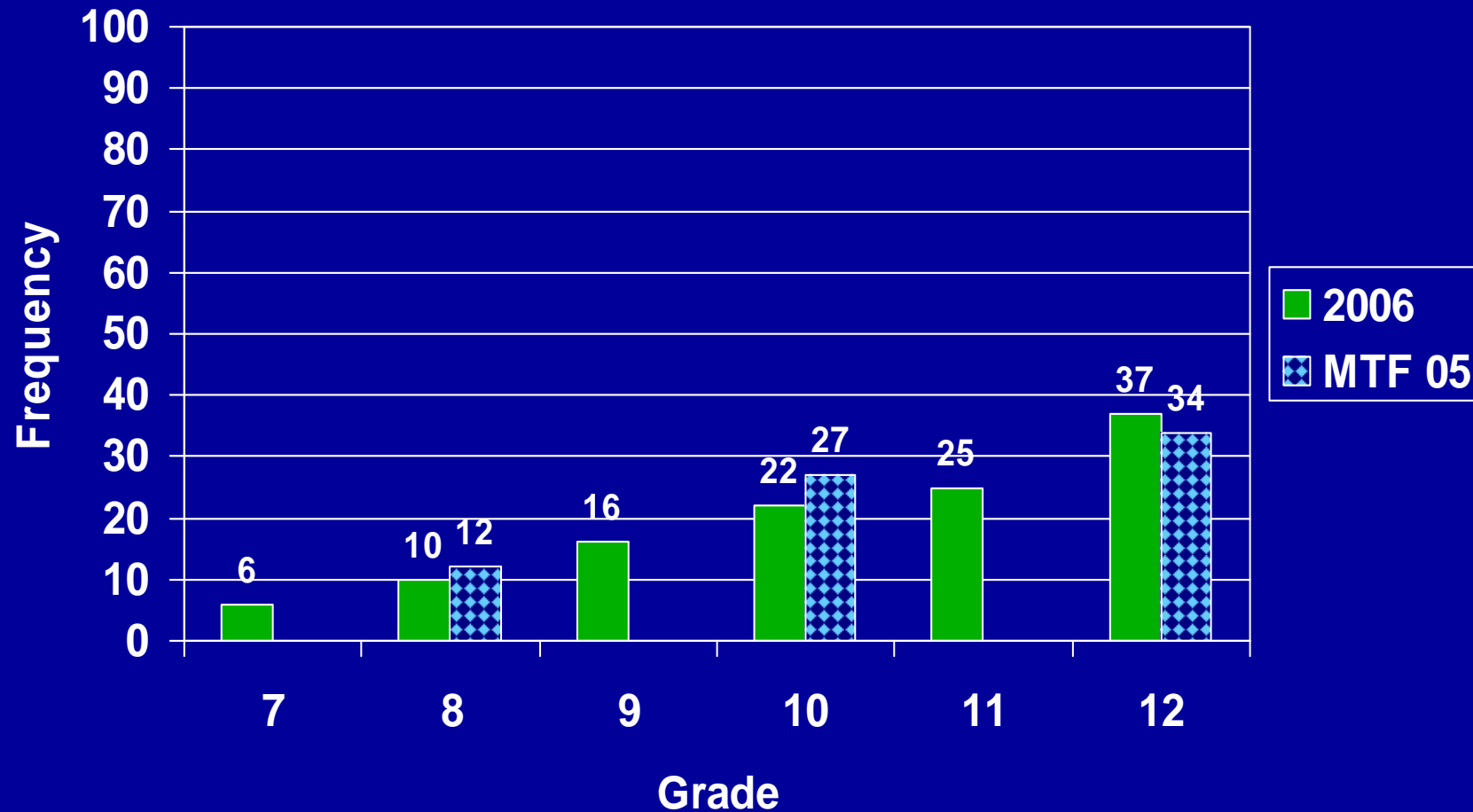
In the last 12 months been to a party one or more times where peers were drinking.



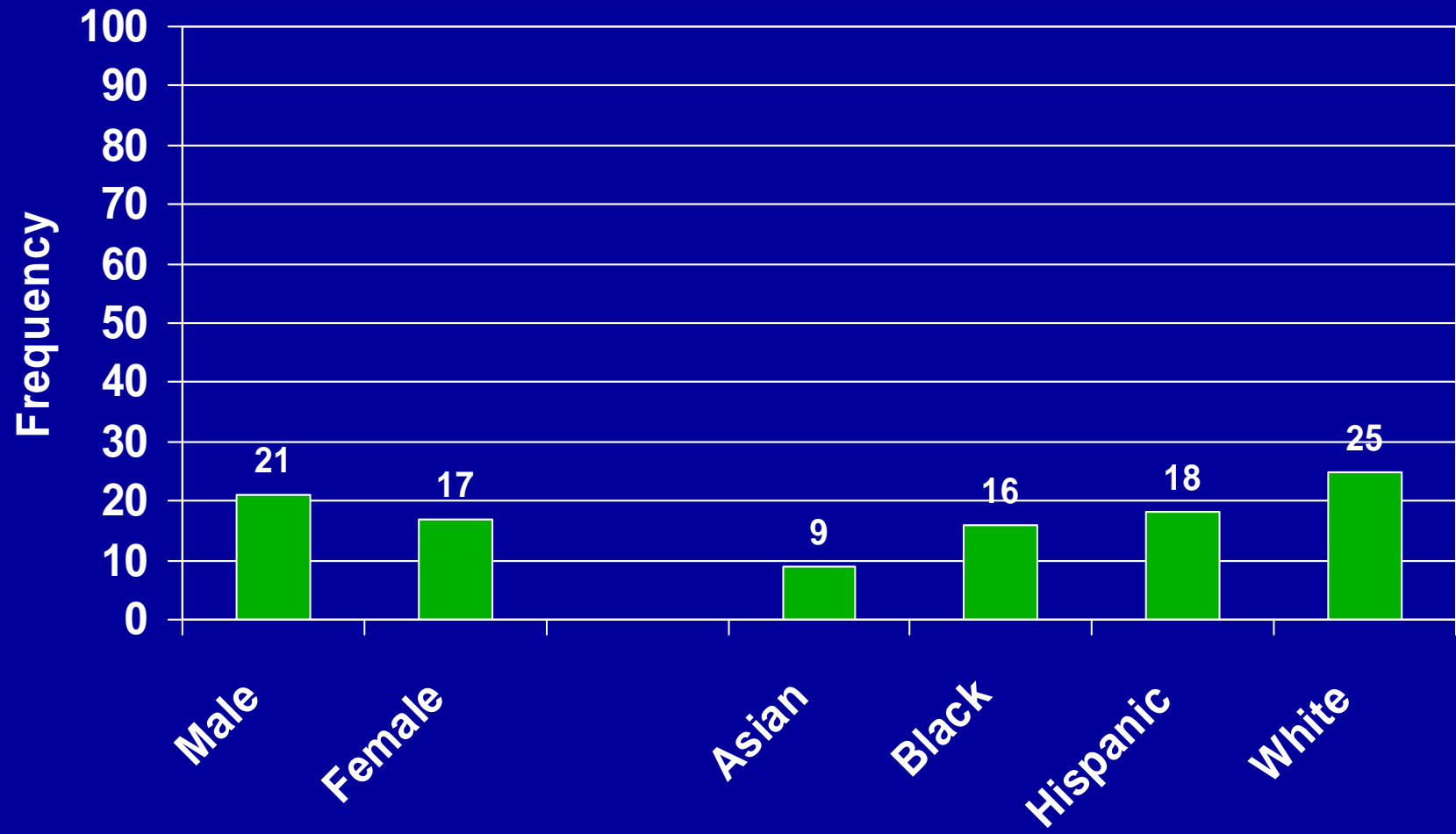
In the last 12 months been to a party one or more times where peers were drinking.



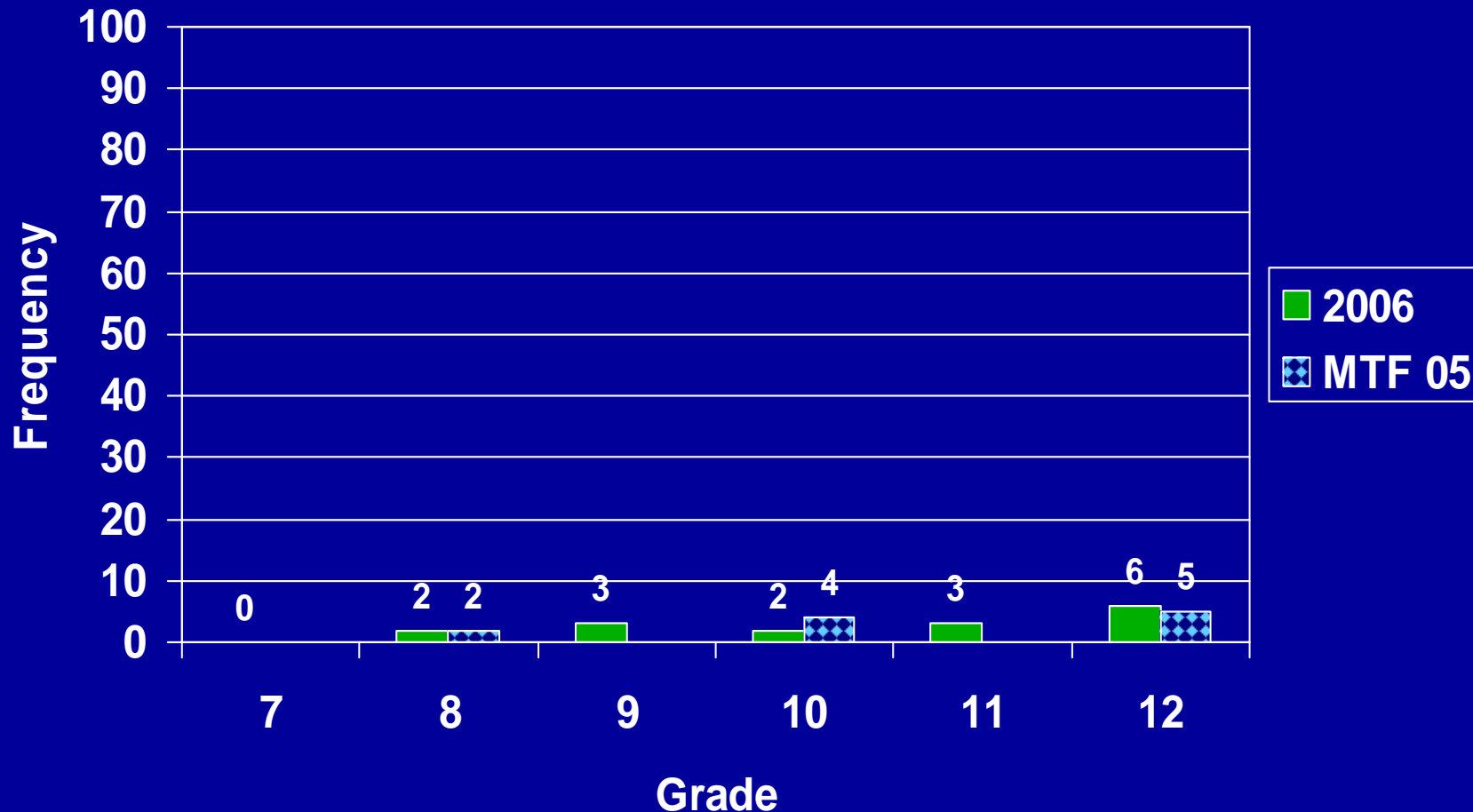
Used marijuana one or more times in last 12 months.



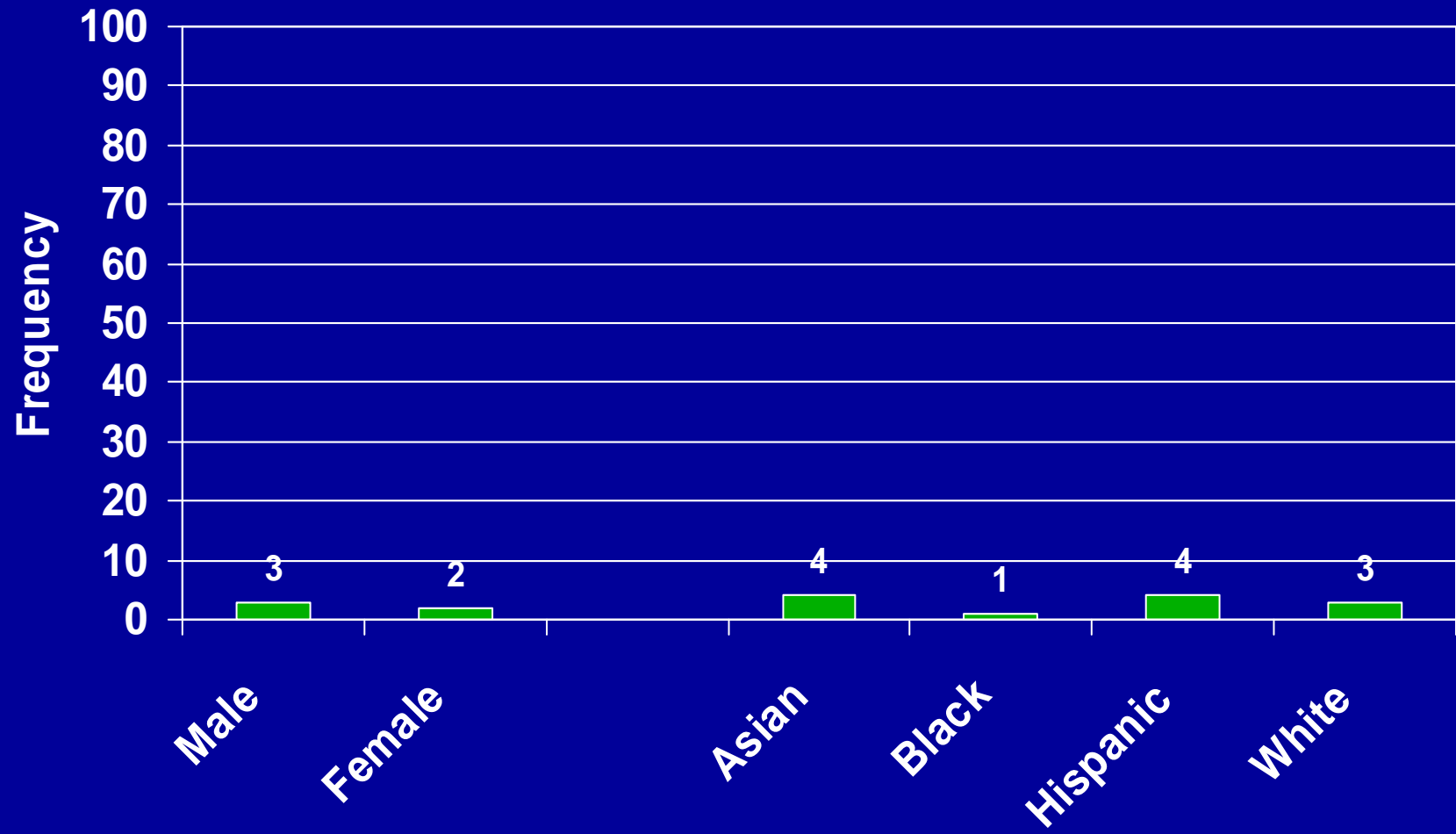
Used marijuana one or more times in last 12 months.



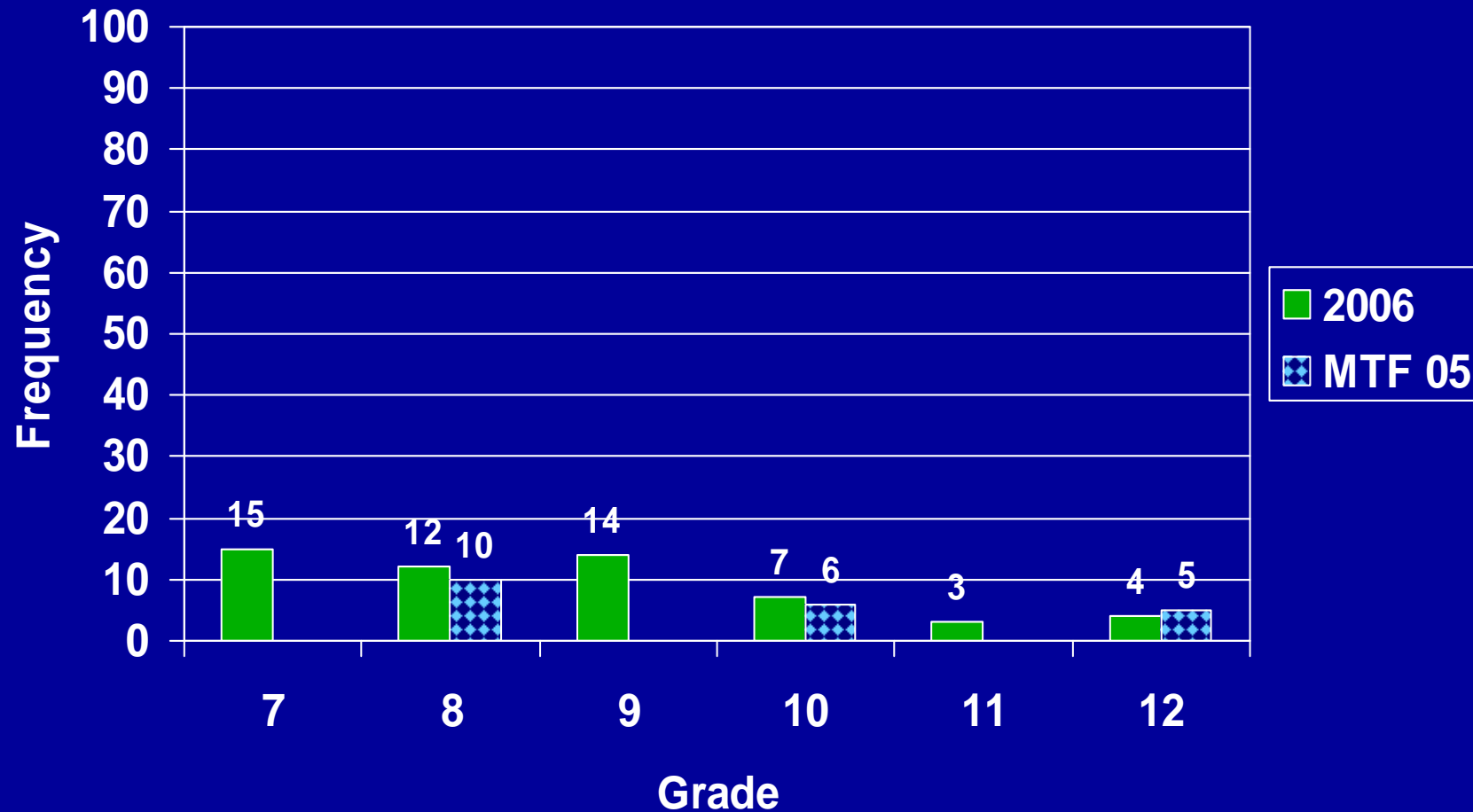
Used cocaine one or more times in last 12 months.



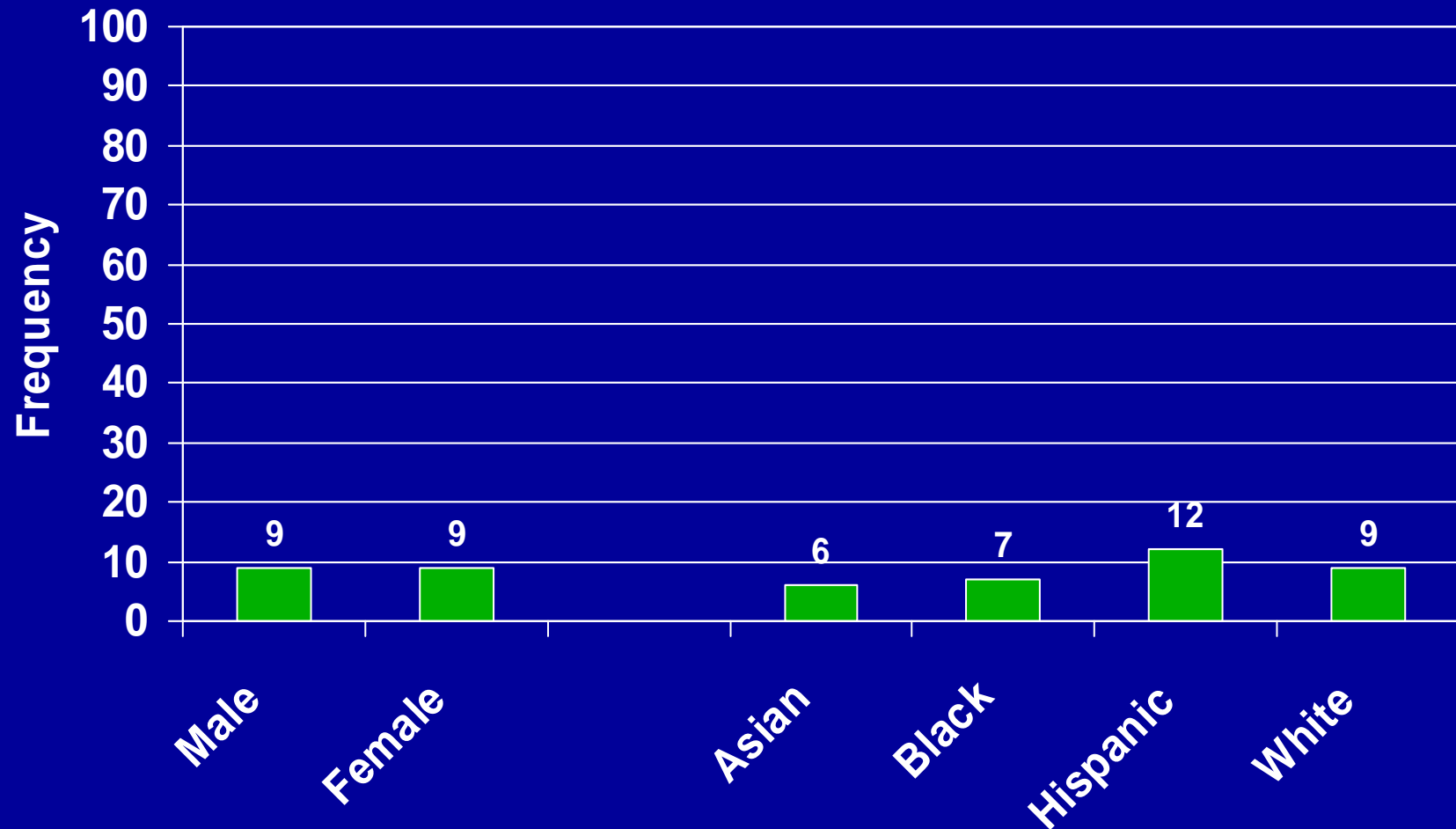
Used cocaine one or more times in last 12 months.



Used inhalants one or more times in the last 12 mos.

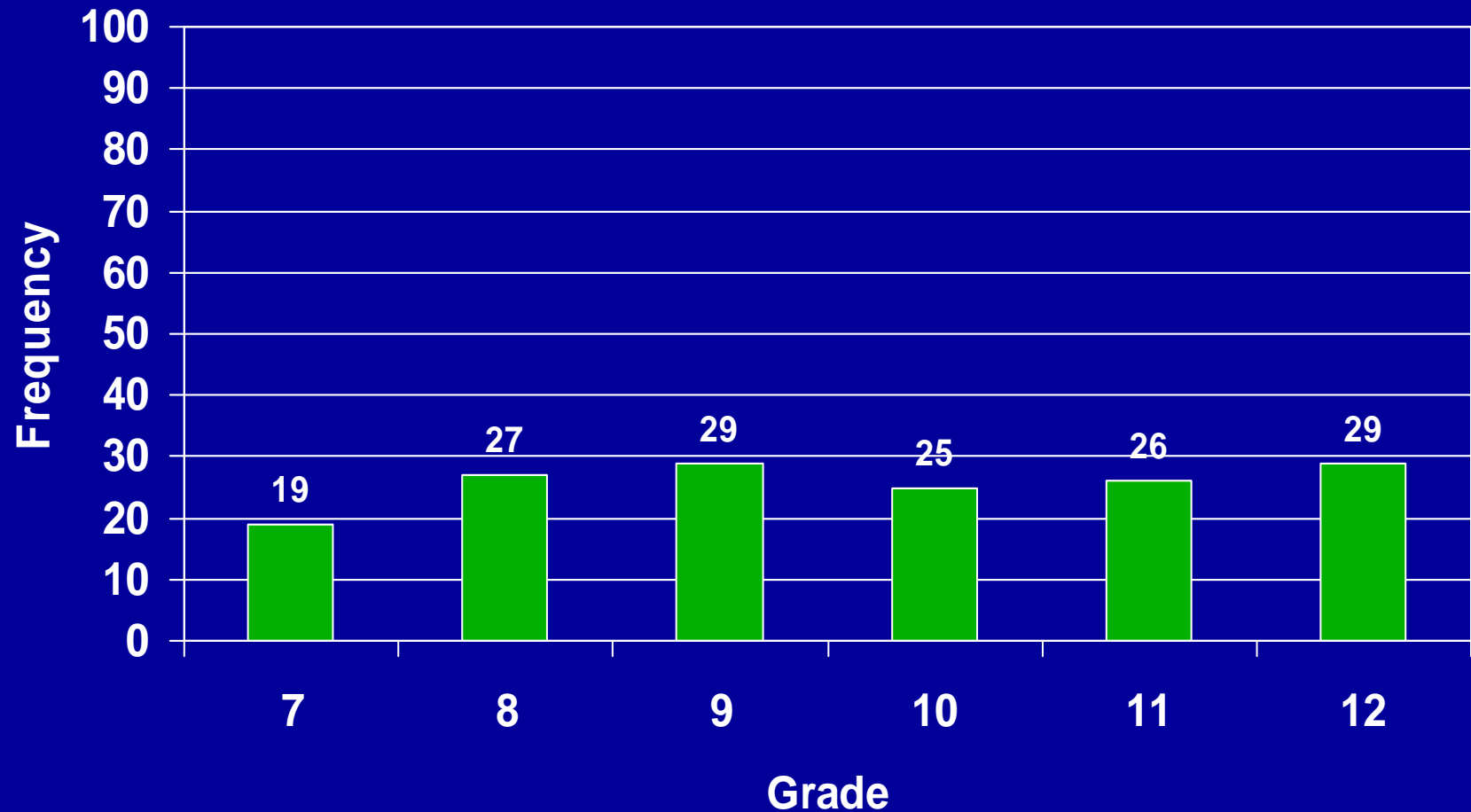


Used inhalants one or more times in the last 12 mos.

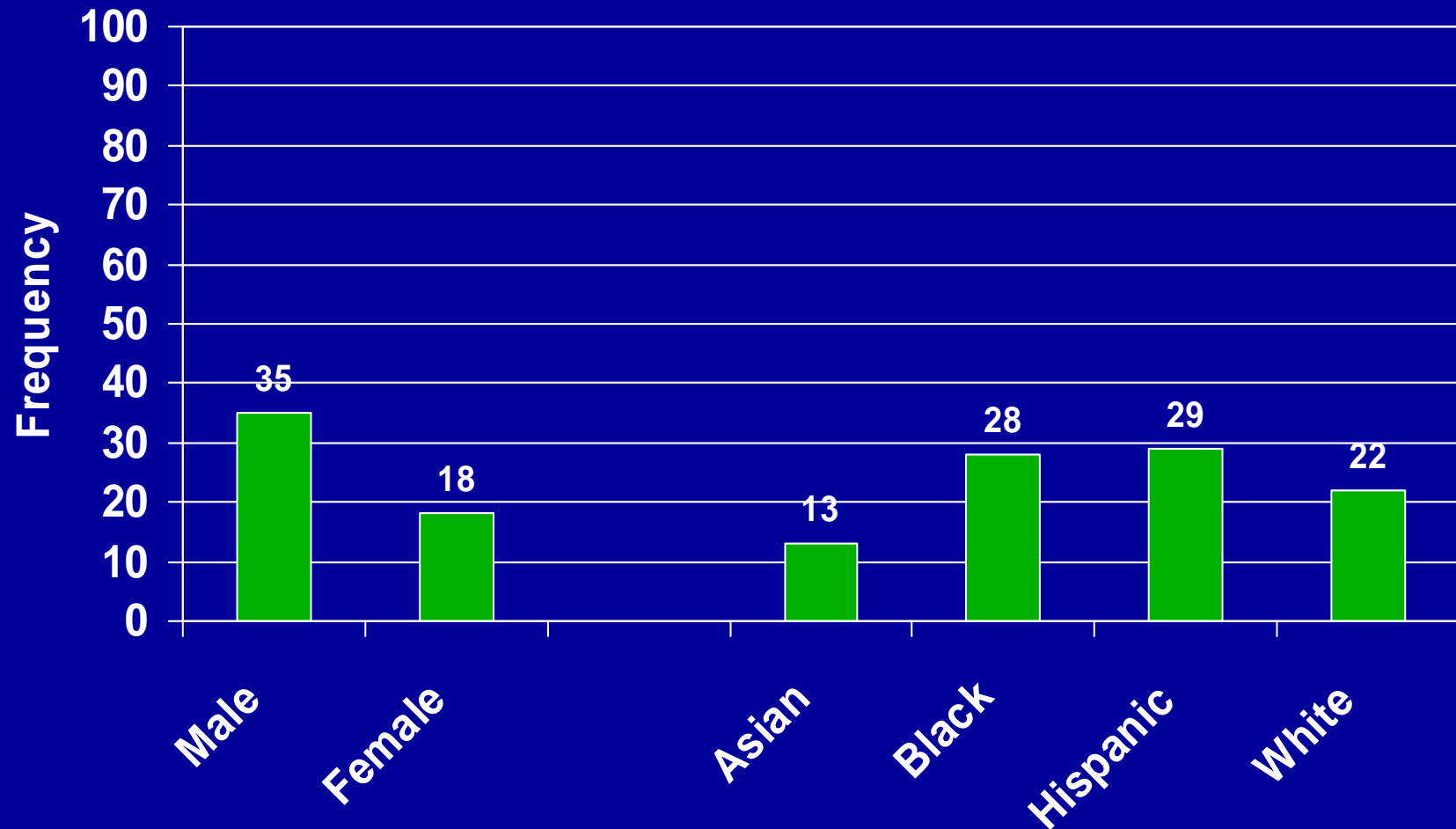


Violent or Anti-Social Behavior: Individual Indicators

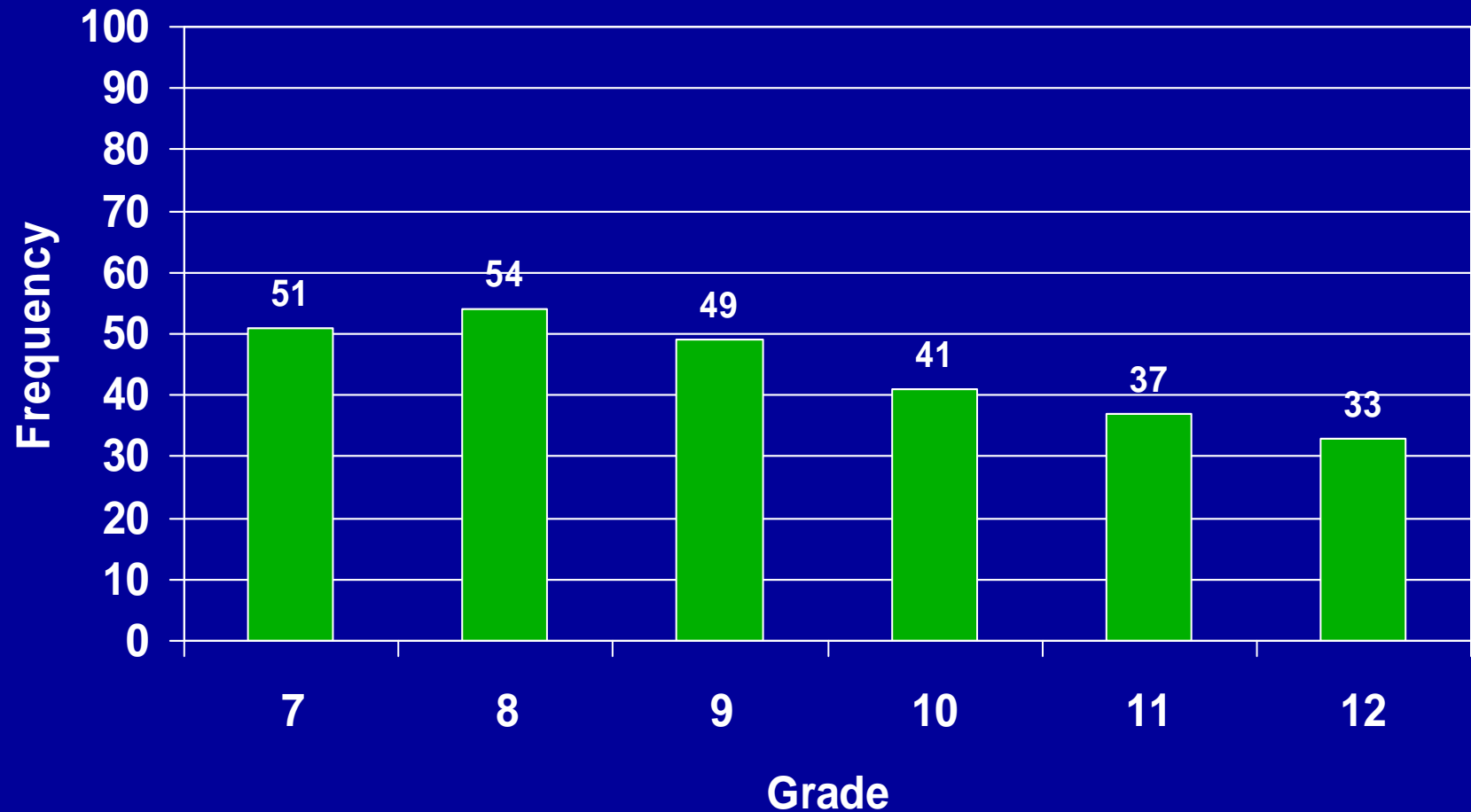
In trouble with the police one or more times in the last year



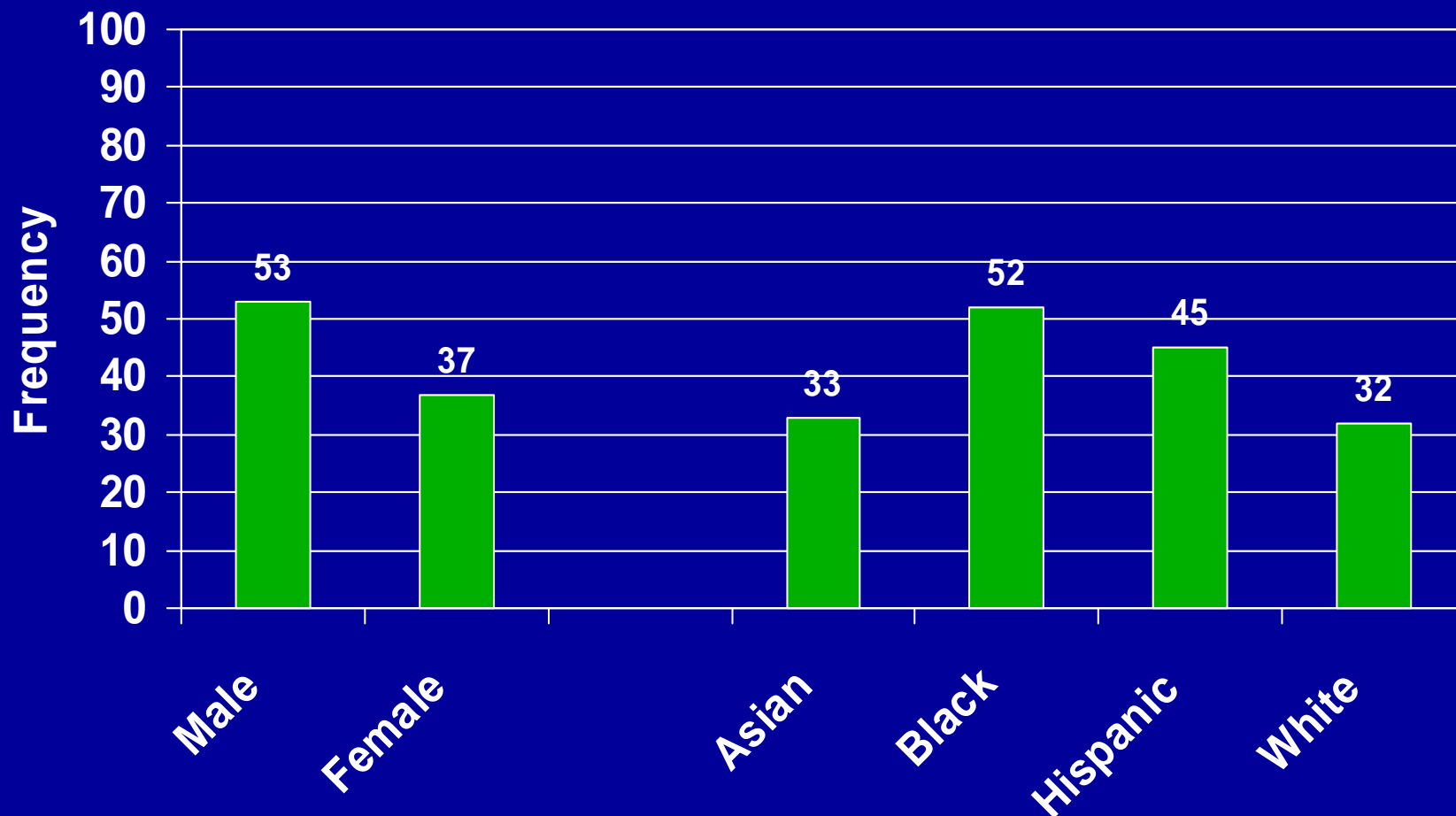
In trouble with the police one or more times in the last year



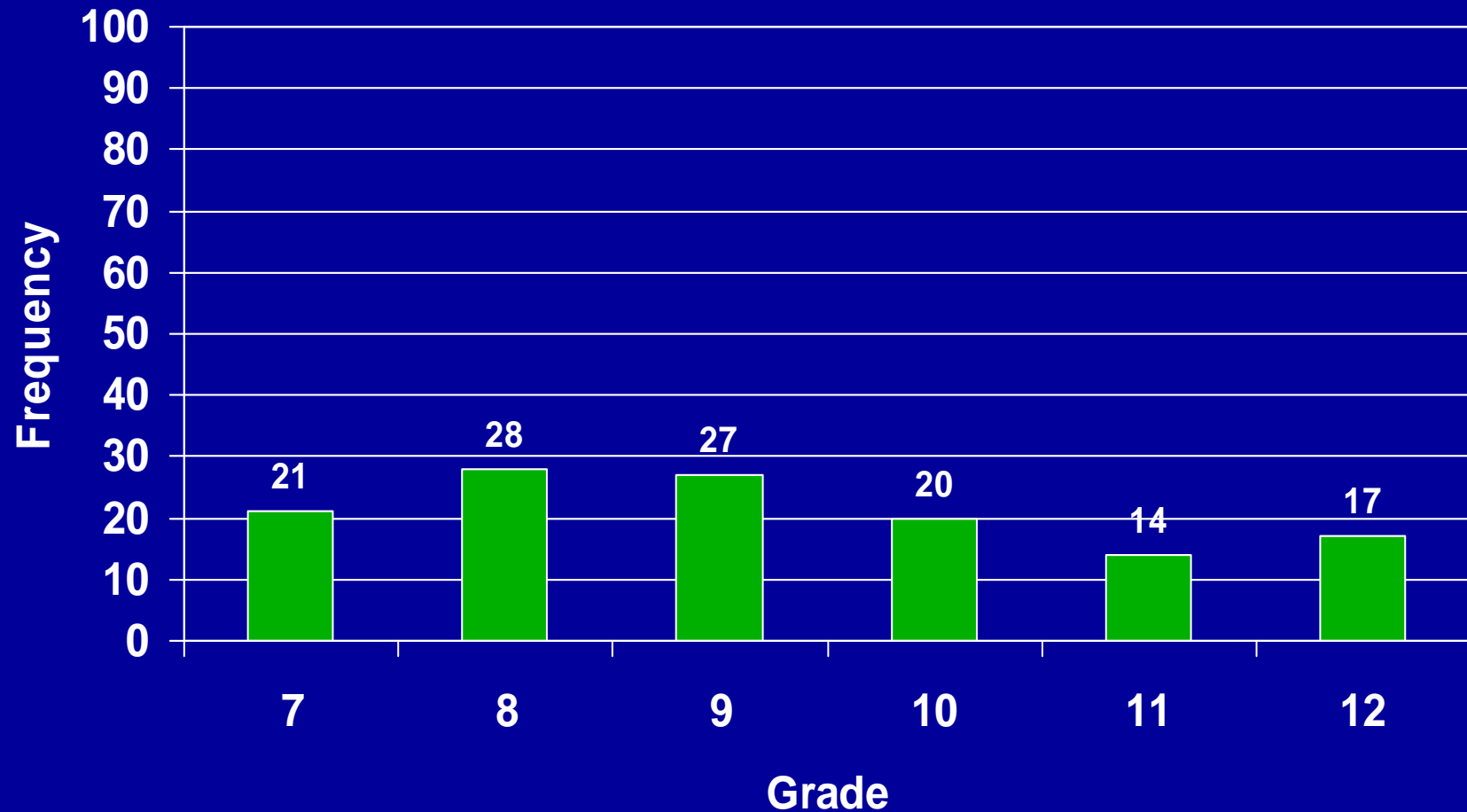
Hit or beat up someone one or more times in the last year.



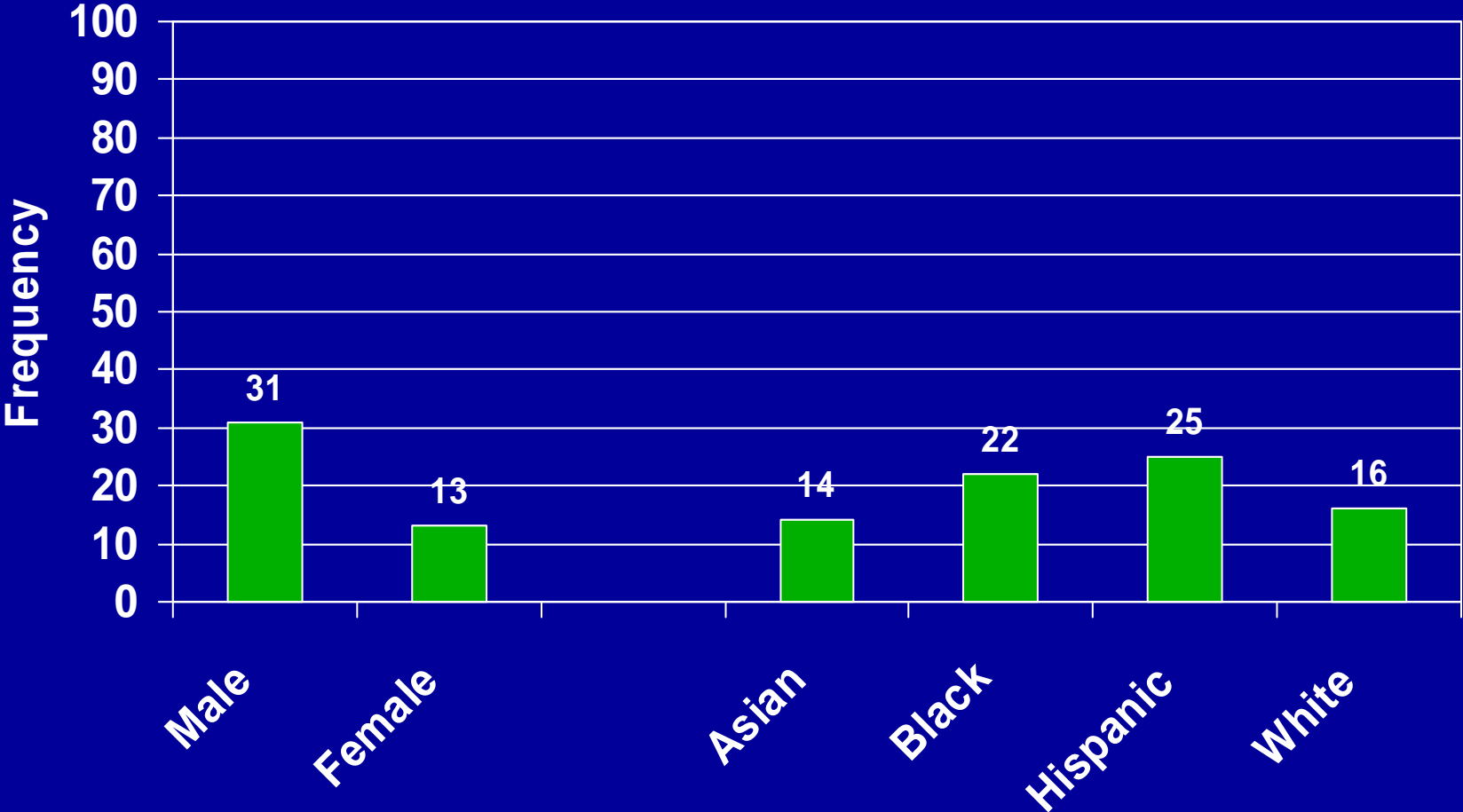
Hit or beat up someone one or more times in the last year.



Damaged property just for fun one or more times in the last year.



Damaged property just for fun one or more times in the last year.



Been the victim of violence where someone caused you pain or injury one or more times (2 yr period).

