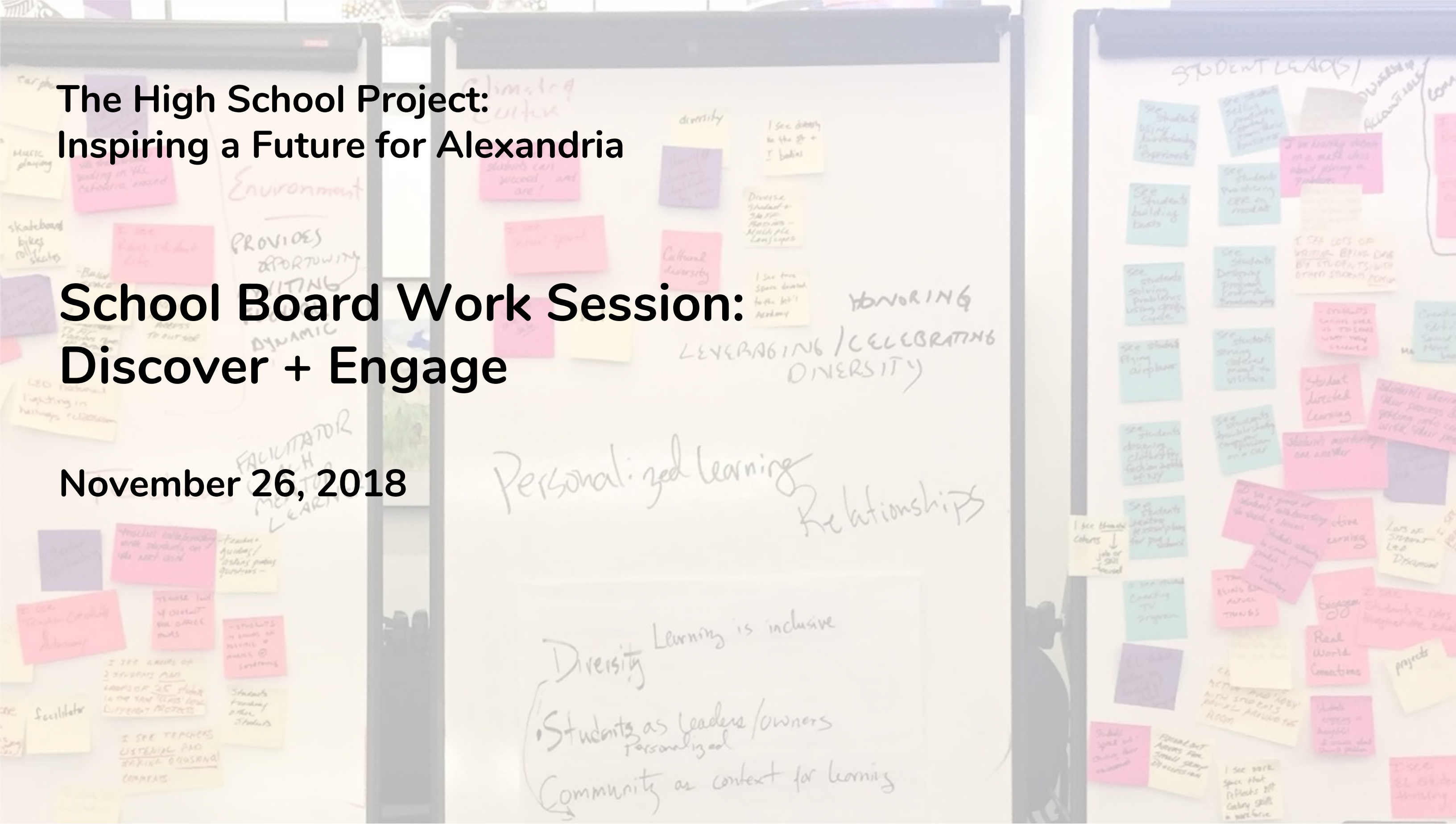


# The High School Project: Inspiring a Future for Alexandria

## School Board Work Session: Discover + Engage

November 26, 2018



# Agenda

1. Framing the challenge
2. Exploring strategies to expand high school capacity
3. What we are asking you to vote on
4. Next Steps – Conceptual Design and Programming Process

# Framing the Challenge

**ACPS must expand high school capacity and simultaneously seek to expand learning opportunities and experiences, providing optimal and equitable learning environments for all students.**

# Strategies to Expand High School Capacity

## Three strategies to imagine how High School might grow:

- 1 Expand the Existing High School Campus
- 2 Add Additional Comprehensive High School(s)
- 3 Create Off-site Specialty Programs

## How do these options align with our Emerging Educational Vision?

- Community Connected
- Diversity as Strength
- Experiential Learning



# Strategies to Expand High School Capacity

## Considerations independent of strategy selection:

- Options are not mutually exclusive from one another
- Existing sites will all be reviewed and improved to meet program needs
- Minnie Howard Campus will require a reconfiguration
- 9th grade must be better integrated

## How do these options align with our Emerging Educational Vision?

- Community Connected
- Diversity as Strength
- Experiential Learning

# 1 Expand Existing High School

## What this could mean:

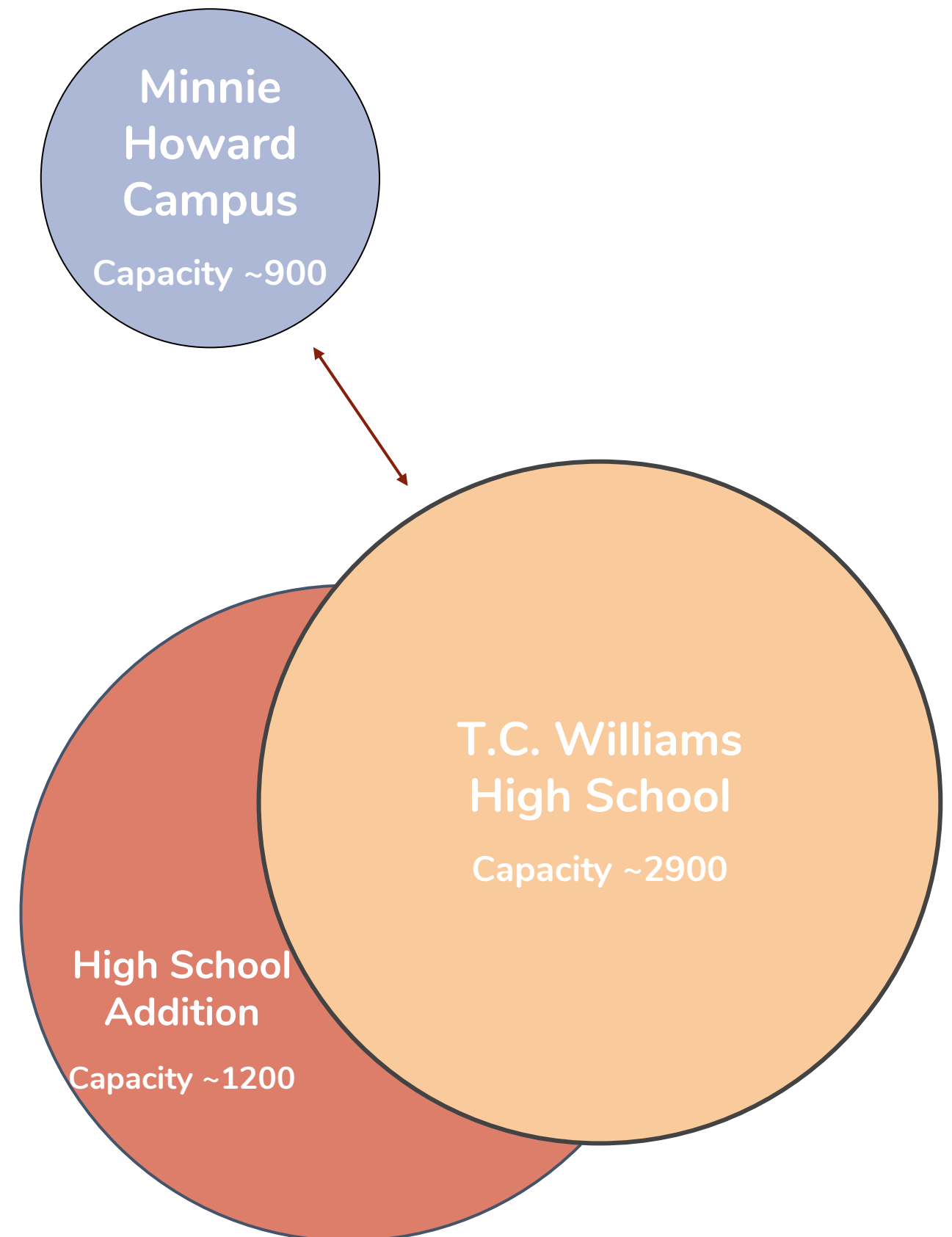
- Physical expansion is not possible without significant, time-consuming land acquisition and / or zoning variance
- Addition to T.C. Williams High School King Street Campus
- Minnie Howard Campus also has physical expansion limitations

## Does this align with the vision:

Community Connected:	<b>No</b>	Size and location are barriers
Diversity as Strength:	<b>Partial</b>	Maintains status quo; limits opportunity for diversity to meet potential
Experiential Learning:	<b>No</b>	Maintains status quo

## Other considerations:

- No districts with similar-sized high schools to T.C. Williams were found to have successfully expanded their current building capacity by 1000 students to beyond 4000 students
- Too large to keep one high school identity
- Sacrifices flexibility to future programmatic demands



# 2 Add Additional Comprehensive High School

## What this could mean:

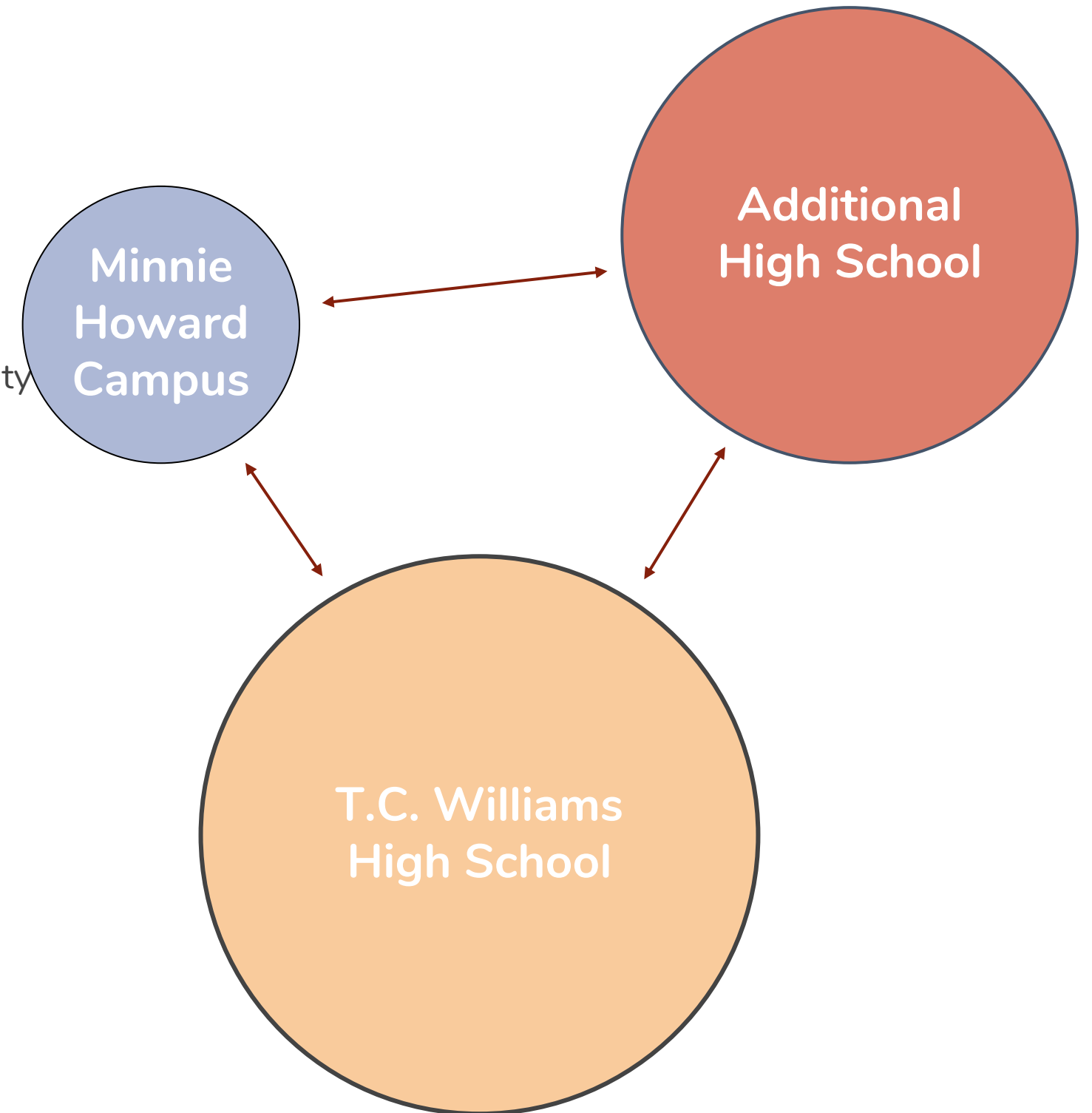
- Building additional High School(s) on other site(s)

## Does this align with the vision:

Community Connected:	<b>No</b>	Loses one high school identity, limits opportunity to reach broader community
Diversity as Strength:	<b>No</b>	Maintains status quo, could separate students depending on student assignment and different programs existing at each campus
Experiential Learning:	<b>No</b>	Maintains status quo, creates more of same learning experience

## Other considerations:

- Doesn't provide as many programmatic experiences as created by distributing specialty programs
- Loses one high school identity
- Not very flexible to future programmatic demands



# 3 Create Off-site Specialty Programs

## What this could mean:

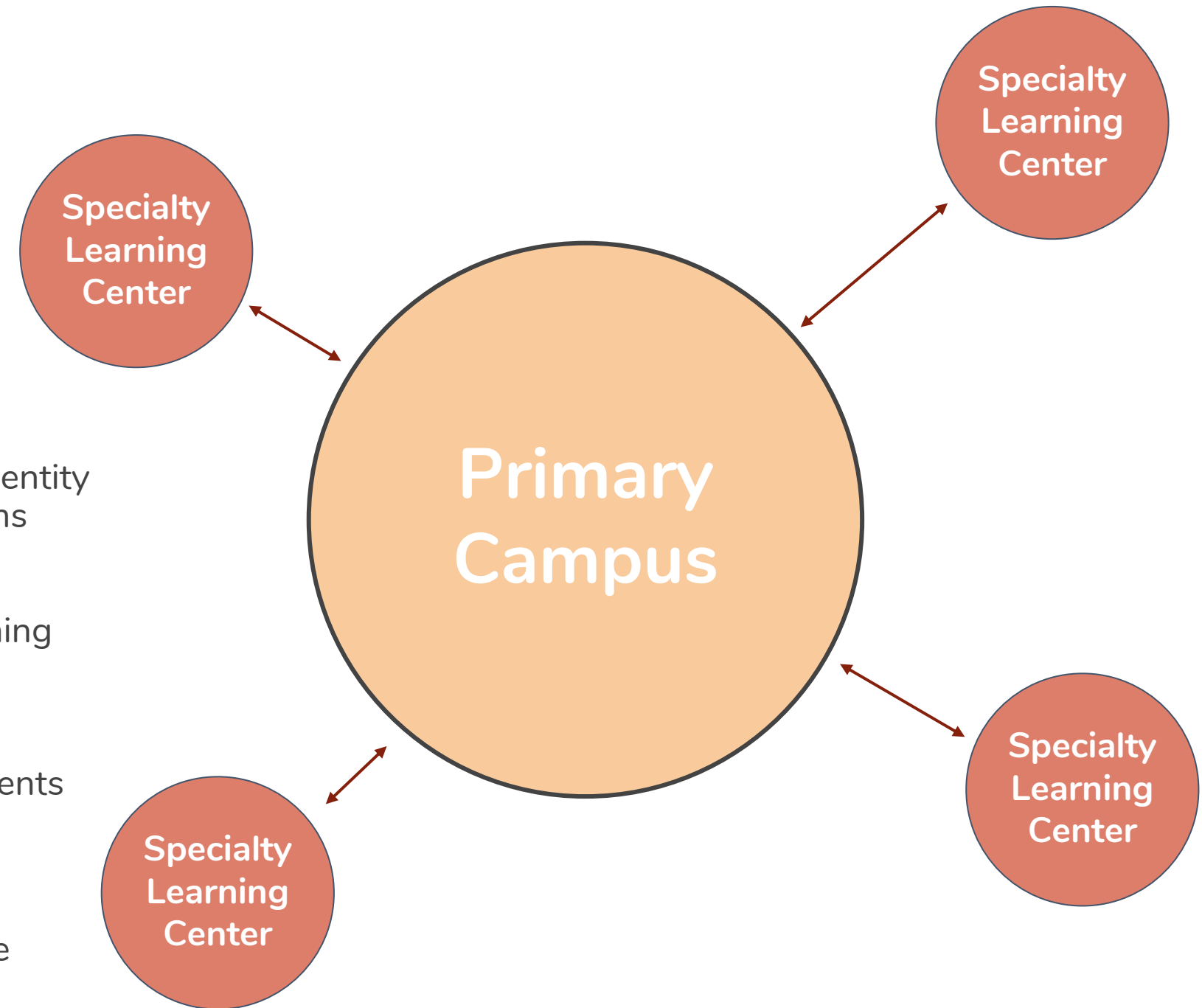
- Purpose-built, shared, or long-term lease buildings creating flexibility in space and implementation and allowing for capacity to be more quickly addressed
- Additional discrete off-site programs established

## How this aligns with the vision:

Community Connected:	<b>Yes</b>	Opportunity to maintain Titan identity while creating strong connections within Alexandria community
Diversity as Strength:	<b>Yes</b>	Increases opportunities for learning experiences and student choice
Experiential Learning:	<b>Yes</b>	Opportunity to create authentic learning experiences for all students

## Other considerations:

- Provides students options to personalize high school experience
- Addresses expansion by creating more specialized learning experiences
- Allows for flexibility if interests change in the community





# Connected High School Network Concept

## Expanded with Specialty Learning Centers

**Primary Campus**

**Specialty Learning Centers**

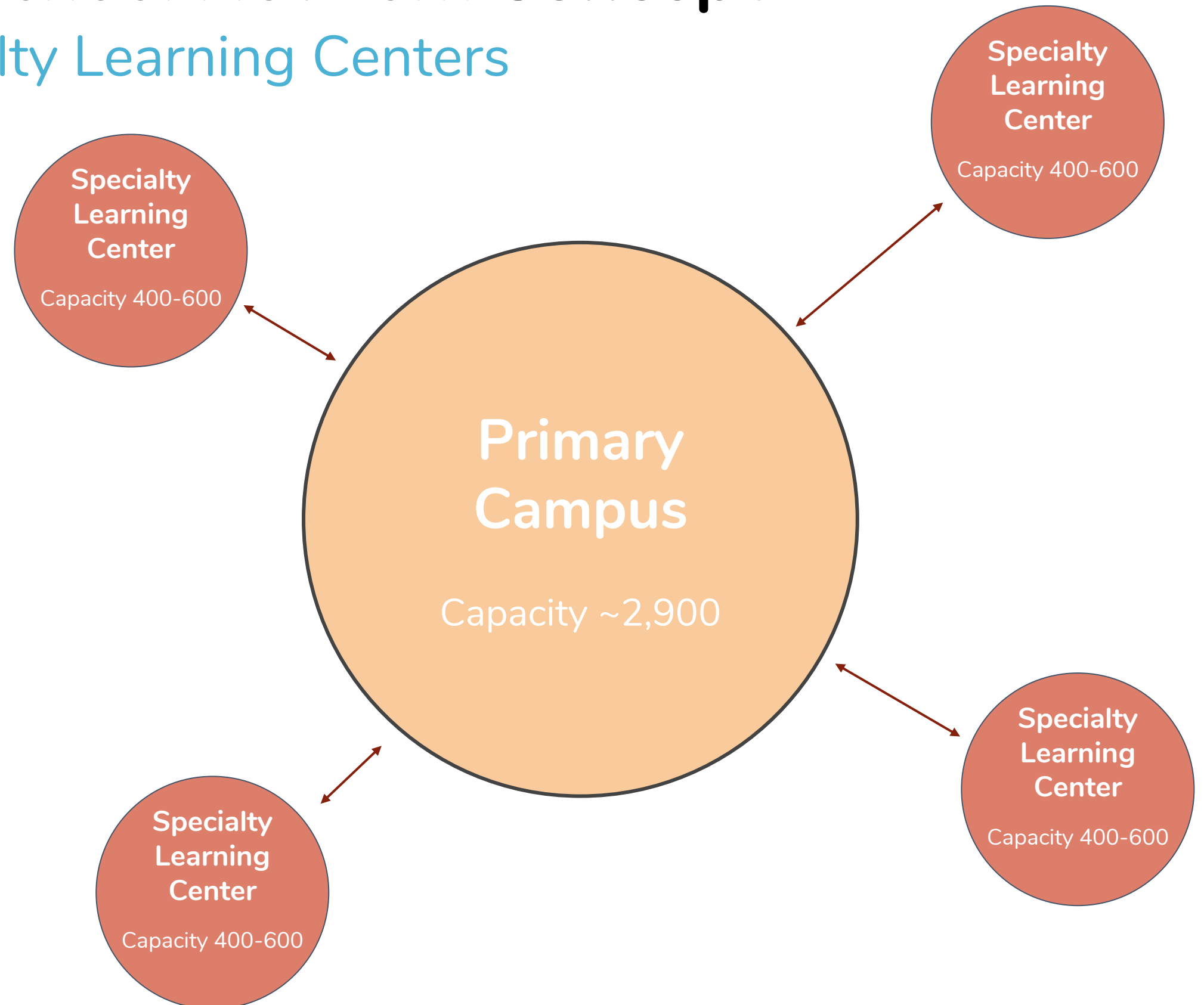
- Purpose-built or long-term lease buildings
- Hosts multiple affinity programs (thematic)
- Division-provided transport
- Half- or full-day sessions

**EXAMPLES of Discrete Off-site Programs**

- Shared or leased space
- Pop-up programs (temporary)
- Accommodates demand
- Existing examples include Chance for Change and Satellite Campus

**EXAMPLES of Individual Field Studies**

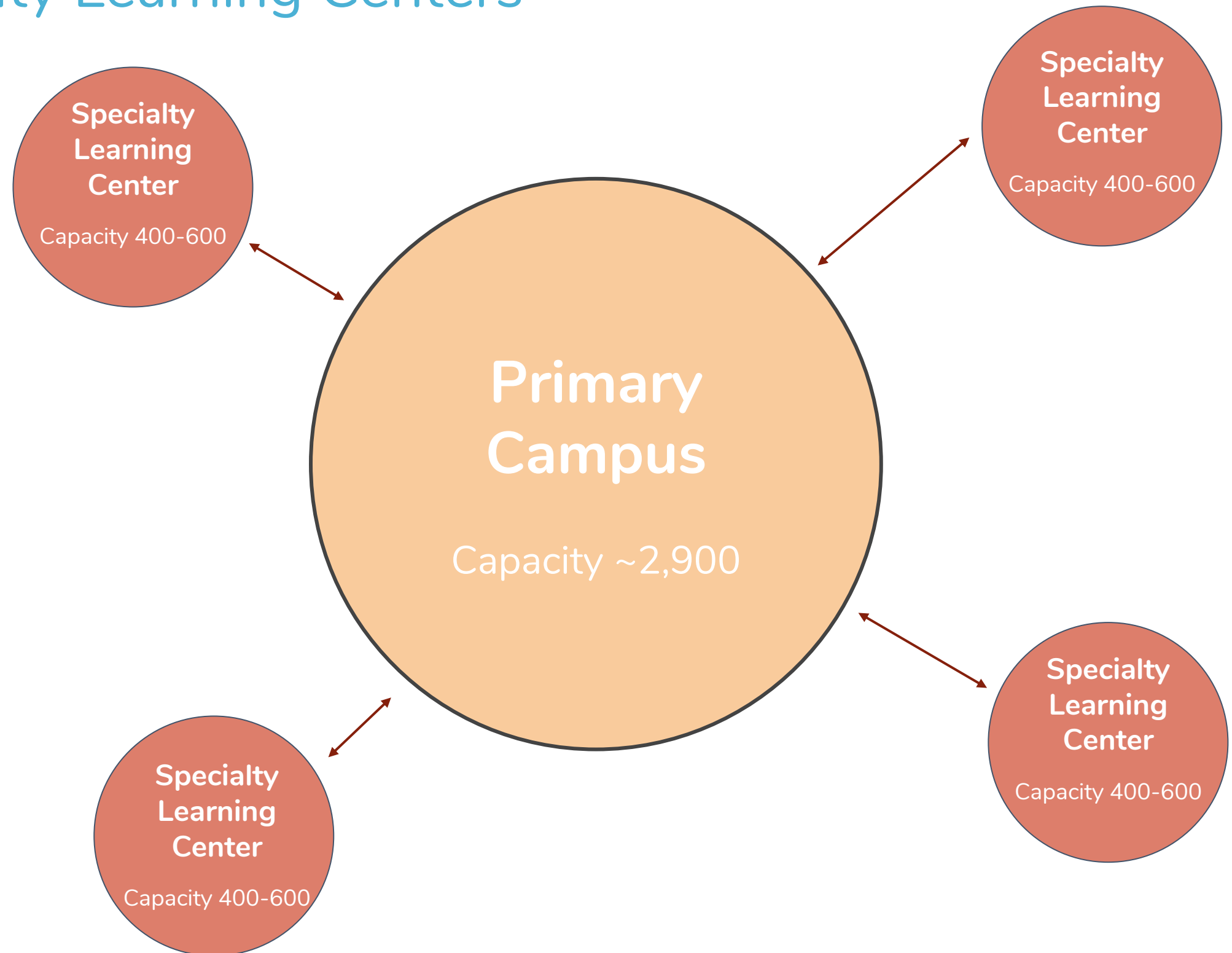
- Internships
- Professional cadets
- Project-partnerships
- Apprenticeships
- Service learning
- Work study



# Connected High School Network Concept

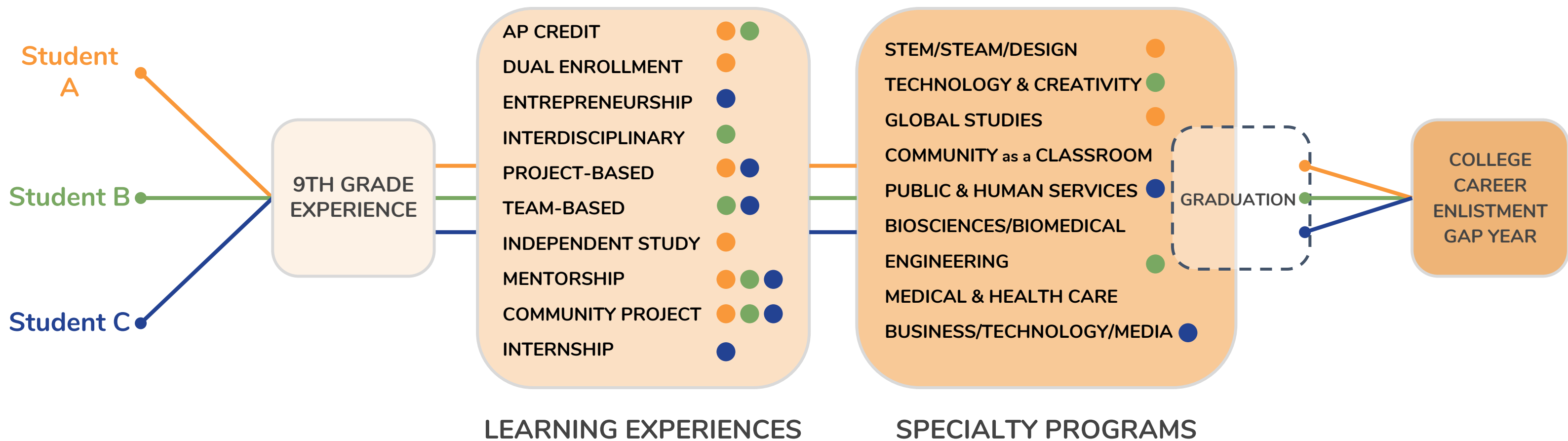
## Expanded with Specialty Learning Centers

Student Capacity by Facility (Concept Only)	
<ul style="list-style-type: none"> <li>Primary Campus</li> </ul>	
Range at a given time =	2500 – 2,875
<b>Specialty Learning Centers</b>	
Average at a given time =	500
Aprx. Total for (4) Centers =	2,000
<b>Discrete Off-site Programs</b>	
Average at a given time =	150
<b>Field Studies</b>	
<b>Total Conceptual Student Capacity =</b>	<b>5,025</b>



# Recommendation | Pathways

## The Student Experience



## What we are asking you to vote on:

- An educational vision that will embody **community connection, diversity as a strength, and experiential learning**.
- A commitment to evolve the current high school curriculum into a connected high school network that incorporates the proposed educational vision.
- A connected high school network to provide optimal learning environments and capacity for all ACPS high school students.

# Next Steps - Conceptual Design and Programming Process

